

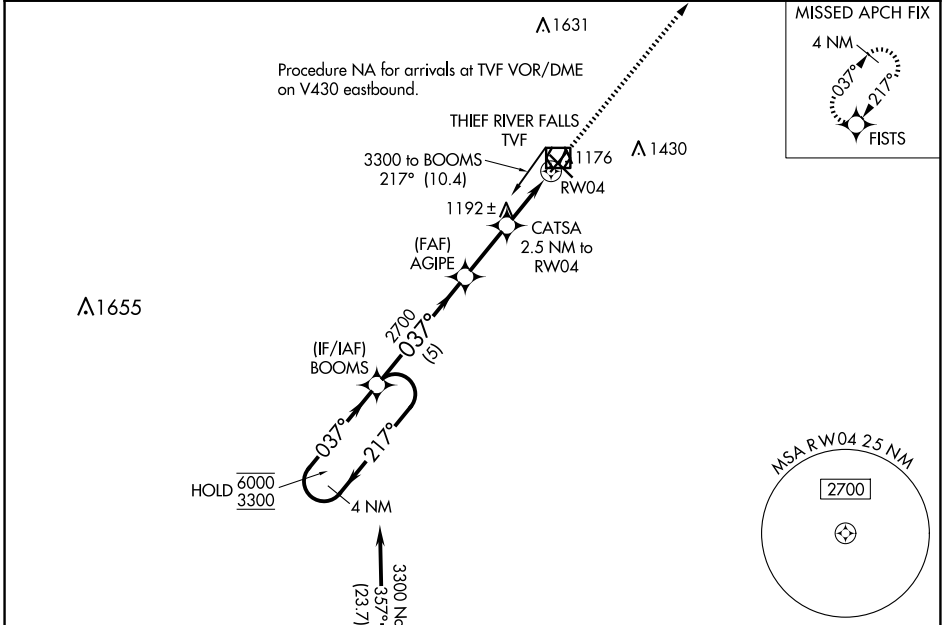
WAAS CH <b>70636</b> <b>W04A</b>	APP CRS <b>037°</b>	Rwy Idg TDZE <b>1116</b> Apt Elev <b>1119</b>	<b>4997</b> <b>1116</b> <b>1119</b>
--	------------------------	---	---

# RNAV (GPS) RWY 4

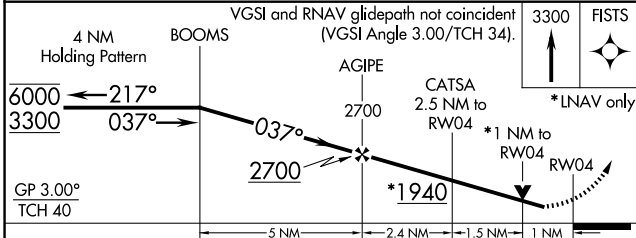
THIEF RIVER FALLS RGNL (TVF)

RNP APCH.	MISSED APPROACH: Climb to 3300 direct FISTS and hold.
<p><b>▼</b> Rwy 4 helicopter visibility reduction below 3/4 SM NA. For uncompensated Baro-VNAV systems, LNAV/VNAV NA below -17°C or above 54°C.</p>	

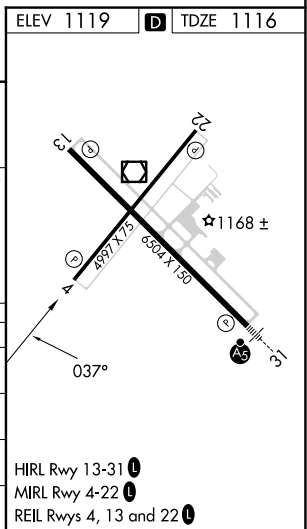
AWOS-3PT <b>119.025</b>	MINNEAPOLIS CENTER <b>132.15 269.6</b>	UNICOM <b>122.8(CTAF) 0</b>
----------------------------	---	--------------------------------



ELEV 1119	<b>D</b> TDZE 1116
-----------	--------------------



CATEGORY	A	B	C	D
LPV DA	1366-1	250 (300-1)		NA
LNAV/VNAV DA	1366-1	250 (300-1)		NA
LNAV MDA	1460-1	344 (400-1)		NA
<b>C</b> CIRCLING	1540-1 421 (500-1)	1580-1 461 (500-1)		NA



NC-1, 17 APR 2025 to 15 MAY 2025

NC-1, 17 APR 2025 to 15 MAY 2025

HIRL Rwy 13-31 **0**  
MIRL Rwy 4-22 **0**  
REIL Rws 4, 13 and 22 **0**