

VOR/DME EWO <b>113.95</b> Chan 86(Y)	APP CRS <b>132°</b>	Rwy Idg TDZE Apt Elev <b>N/A</b> <b>N/A</b> <b>921</b>
--	------------------------	---

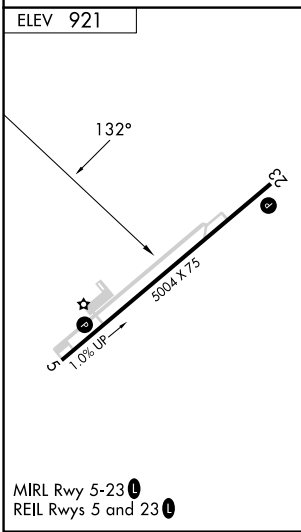
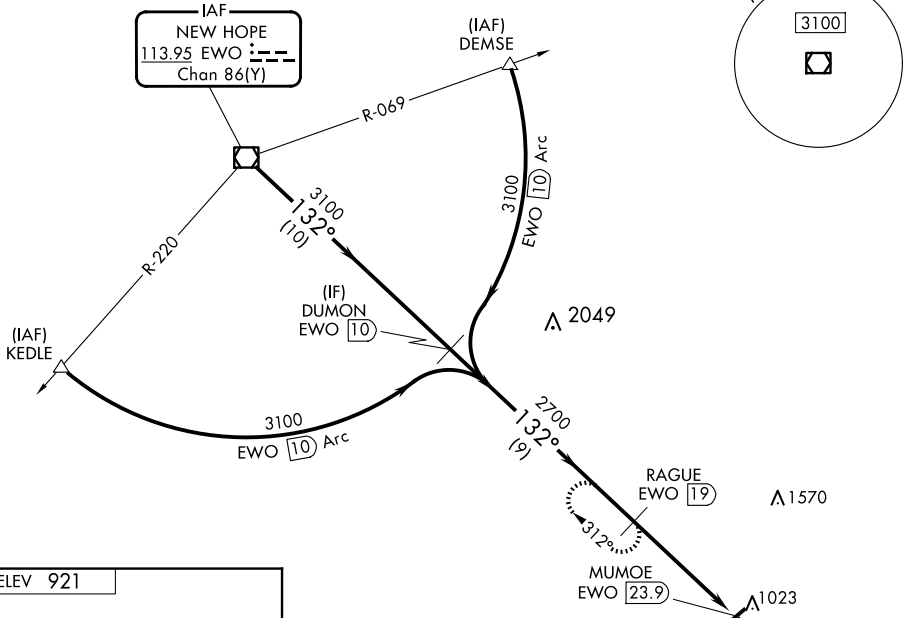
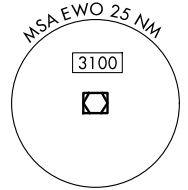
**VOR/DME-A**  
TAYLOR COUNTY (AAS)

**NA** When local altimeter setting not received, use Somerset altimeter setting: increase all MDA 100 feet; increase Cat C visibility 1/4 mile and Cat D visibility 1/2 mile.

MISSED APPROACH: Climbing right turn to 3100 on heading 360° and on EWO R-132 to RAGUE/19 DME and hold.

AWOS-3 <b>121.125</b>	INDIANAPOLIS CENTER <b>124.625 353.65</b>	UNICOM <b>122.7 (CTAF)</b>
--------------------------	--	-------------------------------

**DME REQUIRED**



EWO VOR/DME	DUMON EWO 10	3100	EWO R-132	RAGUE EWO 19
3100	3100	2700	MUMOE EWO 23.9	
10 NM		9 NM		4.9 NM
CATEGORY	A	B	C	D
<b>C</b> CIRCLING	1540-1	619 (700-1)	1540-1 3/4 619 (700-1 3/4)	1660-2 1/4 739 (800-2 1/4)

SE-1, 17 APR 2025 to 15 MAY 2025

SE-1, 17 APR 2025 to 15 MAY 2025