

NDB RWY 31

RAY S. MILLER AAF (KRYM)

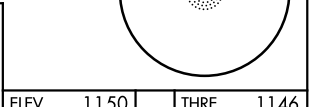
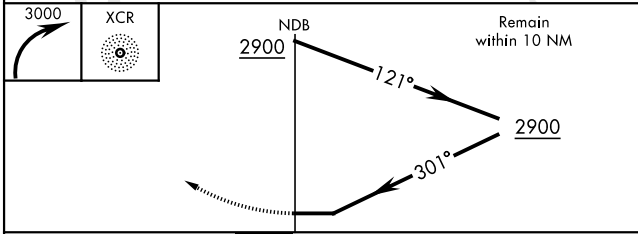
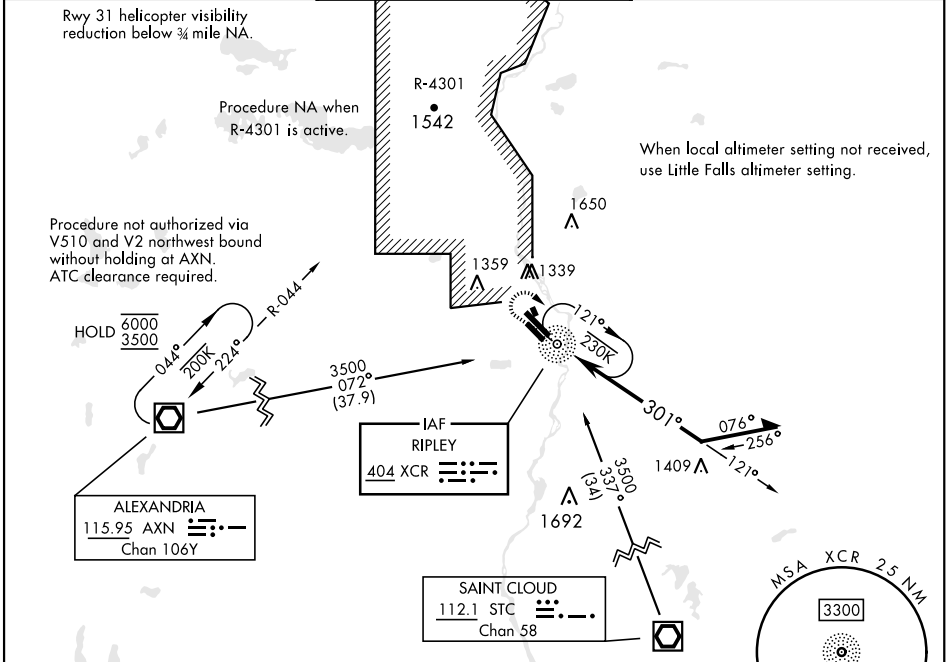
NDB XCR 404	APCH CRS 301°	Rwy Ldg THRE 6100 1146	Arprt Elev 1150
-----------------------	-------------------------	--	---------------------------

[USA]

▼ *Inop table does not apply to CAT AB. When ALS inop, increase CAT CD vis to 2 miles.
 ** Inop table does not apply to CAT A. When ALS inop, increase CAT B vis to 1/4 miles, CAT CD vis to 2 miles.
 ▲ NA

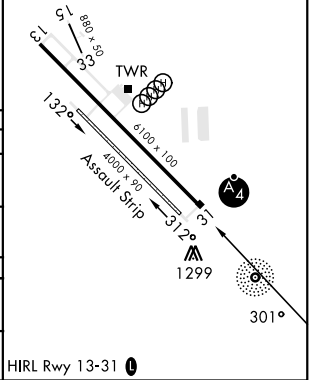
MALSF MISSED APPROACH: Climbing right turn to 3000 in XCR NDB holding pattern.

MINNEAPOLIS CENTER 118.05 239.0	TOWER ★ 126.2 254.4	CLNC DEL 126.2
---	-------------------------------	--------------------------



ELEV	1150	THRE	1146
------	------	------	------

CATEGORY	A	B	C	D
S-31*	1860-1 714 (800-1)	1860-1 714 (800-1)	1860-1 714 (800-1)	1860-1 714 (800-1)
CIRCLING	1860-1 710 (800-1)	1860-1 710 (800-1)	1860-2 710 (800-2)	2080-3 930 (1000-3)
LITTLE FALLS ALTIMETER SETTING MINIMUMS				
S-31**	1900-1 754 (800-1)	1900-1 754 (800-1)	1900-1 754 (800-1)	1900-1 754 (800-1)
CIRCLING	1900-1 750 (800-1)	1900-1 750 (800-1)	1900-2 750 (800-2)	2120-3 970 (1000-3)



NDB RWY 31

NC-1, 17 APR 2025 to 15 MAY 2025

NC-1, 17 APR 2025 to 15 MAY 2025