

# RNAV (GPS) RWY 13

RAY S. MILLER AAF (KRYM)

[USA]

APCH CRS	Rwy Idg	6100
132°	TDZE	1150
	Arprt Elev	1150

RNP APCH-GPS

RADAR required for procedure entry at STC VOR/DME.

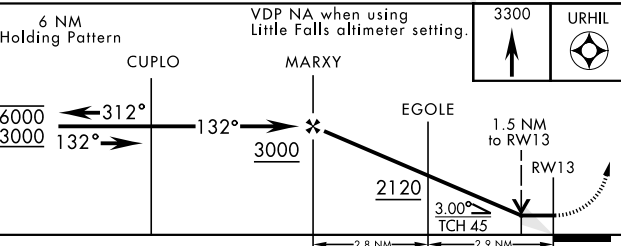
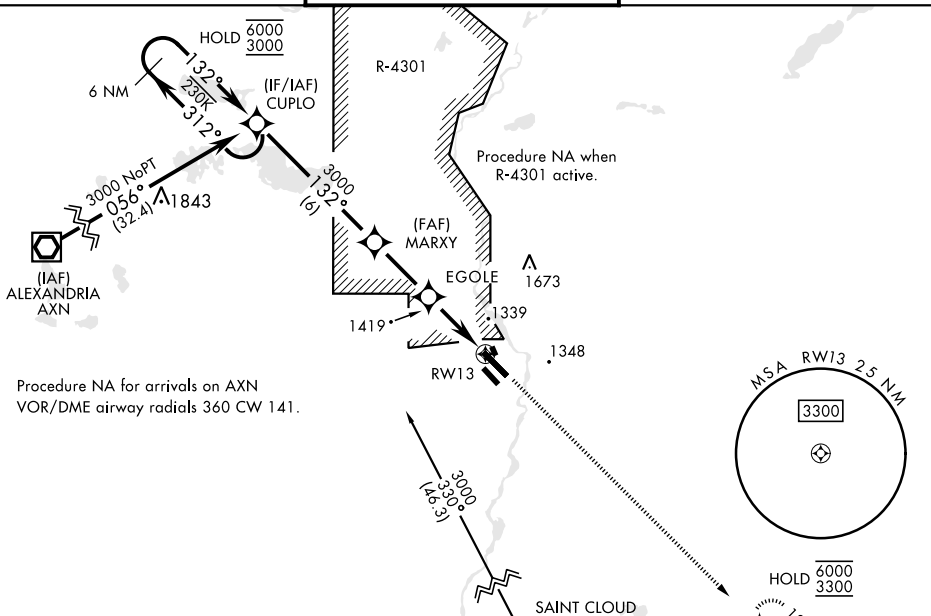


MISSED APPROACH: Climb to 3300 direct URHIL and hold.

MINNEAPOLIS CENTER  
118.05 239.0

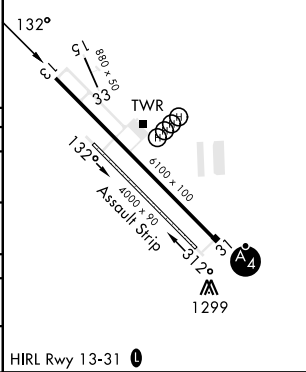
MILLER TOWER ★  
126.2 254.4

CLNC DEL  
126.2



ELEV	1150	TDZE	1150
------	------	------	------

CATEGORY	A	B	C	D
RNAV MDA	1680-1 530 (600-1)	1680-1½ 530 (600-1½)		
<b>C</b> CIRCLING	1680-1 530 (600-1)	1720-1½ 570 (600-1½)	2080-3 930 (1000-3)	
LITTLE FALLS ALTIMETER SETTING				
RNAV MDA	1720-1 570 (600-1)	1720-1½ 570 (600-1½)		
<b>C</b> CIRCLING	1720-1 570 (600-1)	1760-1¾ 610 (700-1¾)	2120-3 970 (1000-3)	



NC-1, 17 APR 2025 to 15 MAY 2025

NC-1, 17 APR 2025 to 15 MAY 2025

# RNAV (GPS) RWY 13