

RNAV (GPS) RWY 31

APCH CRS 312°	Rwy Idg 6100
	THRE 1146
	Arprt Elev 1150

[USA]

RAY S. MILLER AAF (KRYM)

▽ * When ALS inop, increase CAT D vis to 1 ¼ miles.

MALSF

MISSED APPROACH: Climb to 3000 direct CUPLO and hold.

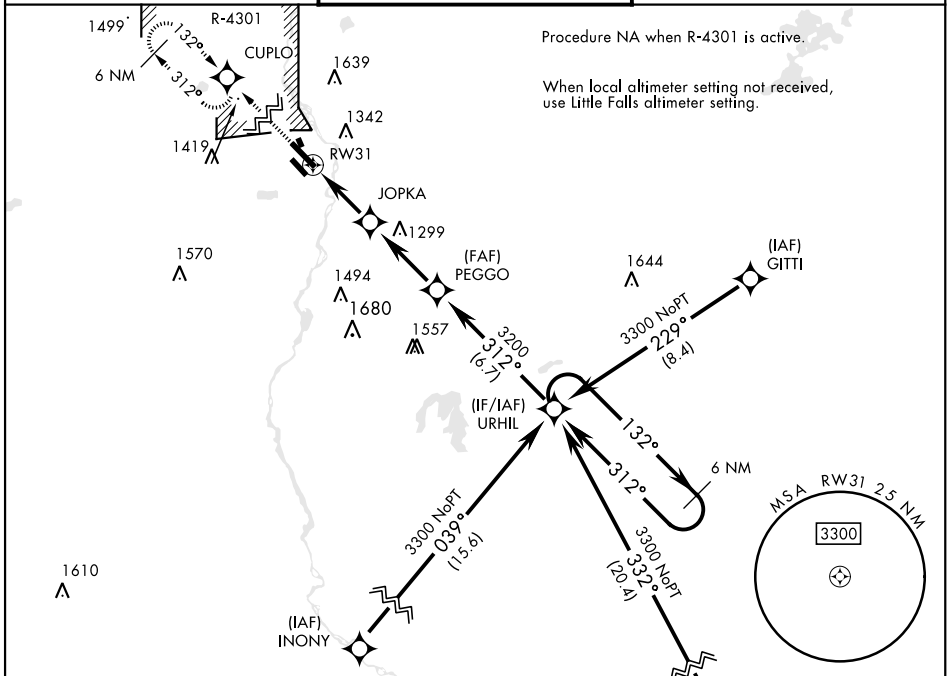
▲ NA DME/DME RNP-0.3 NA.



MINNEAPOLIS CENTER
118.05 239.0

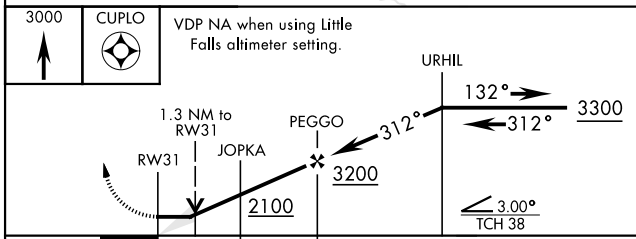
MILLER TOWER ★
126.2 254.4

CLNC DEL
126.2

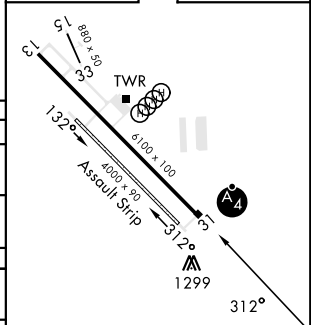


Procedure NA when R-4301 is active.

When local altimeter setting not received, use Little Falls altimeter setting.



ELEV	1150	THRE	1146
------	------	------	------



CATEGORY	A	B	C	D
RNAV MDA *	1580-¾ 434 (500-¾)	1580-1 434 (500-1)		
C CIRCLING	1640-1 490 (500-1)	1660-1 510 (600-1)	1720-1½ 570 (600-1½)	2080-3 930 (1000-3)
LITTLE FALLS ALTIMETER SETTING				
RNAV MDA *	1620-¾ 474 (500-¾)	1620-1½ 474 (500-1½)		
C CIRCLING	1680-1 530 (600-1)	1760-1¾ 610 (700-1¾)	2120-3 970 (1000-3)	

RNAV (GPS) RWY 31

NC-1, 17 APR 2025 to 15 MAY 2025

NC-1, 17 APR 2025 to 15 MAY 2025