

SINTON, TEXAS

AL-5274 (FAA)

24137

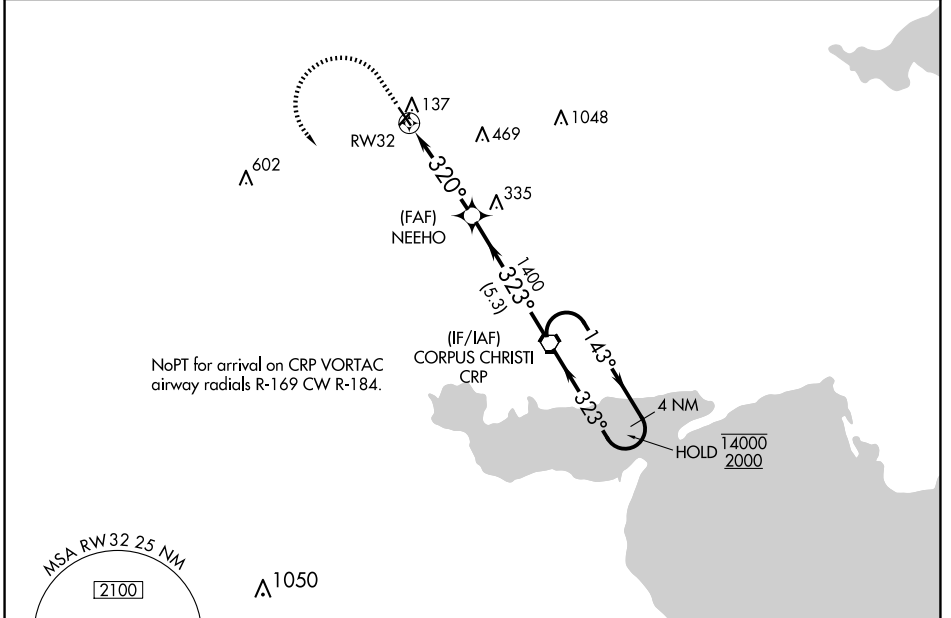
APP CRS	Rwy Idg	<b>3923</b>
<b>320°</b>	TDZE	<b>48</b>
	Apt Elev	<b>48</b>

# RNAV (GPS) RWY 32

SINTON (T69)

RNP APCH.	MISSED APPROACH: Climb to 1000 then climbing left turn to 2000 direct CRP VORTAC and hold.
<p><b>T</b> Procedure NA at night.</p> <p><b>A</b> Rwy 32 helicopter visibility reduction below 1 SM NA.</p>	

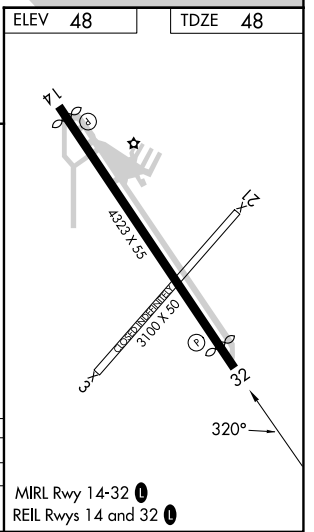
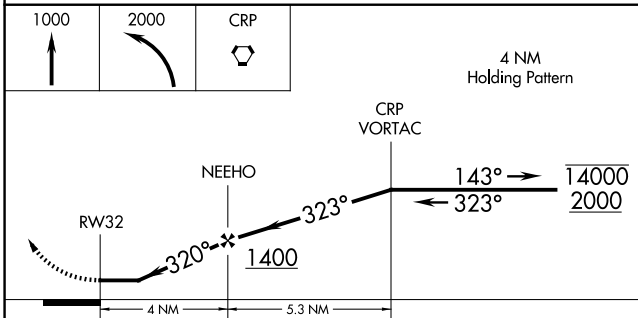
AWOS-3 <b>118.25</b>	CORPUS APP CON <b>120.9 348.725</b>	UNICOM <b>122.8 (CTAF) 0</b>
-------------------------	--	---------------------------------



SC-3, 17 APR 2025 to 15 MAY 2025

SC-3, 17 APR 2025 to 15 MAY 2025

ELEV <b>48</b>	TDZE <b>48</b>
----------------	----------------



CATEGORY	A	B	C	D
LNAV MDA	520-1	472 (500-1)		NA
CIRCLING	620-1 572 (600-1)	720-1 672 (700-1)		NA

SINTON, TEXAS  
Orig-B 31DEC20

28°02' N-97°33' W

SINTON (T69)  
**RNAV (GPS) RWY 32**

MIRL Rwy 14-32 0  
REIL Rwy 14 and 32 0