

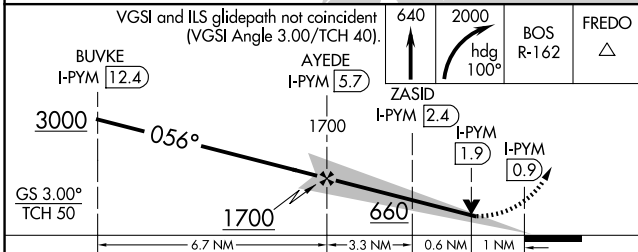
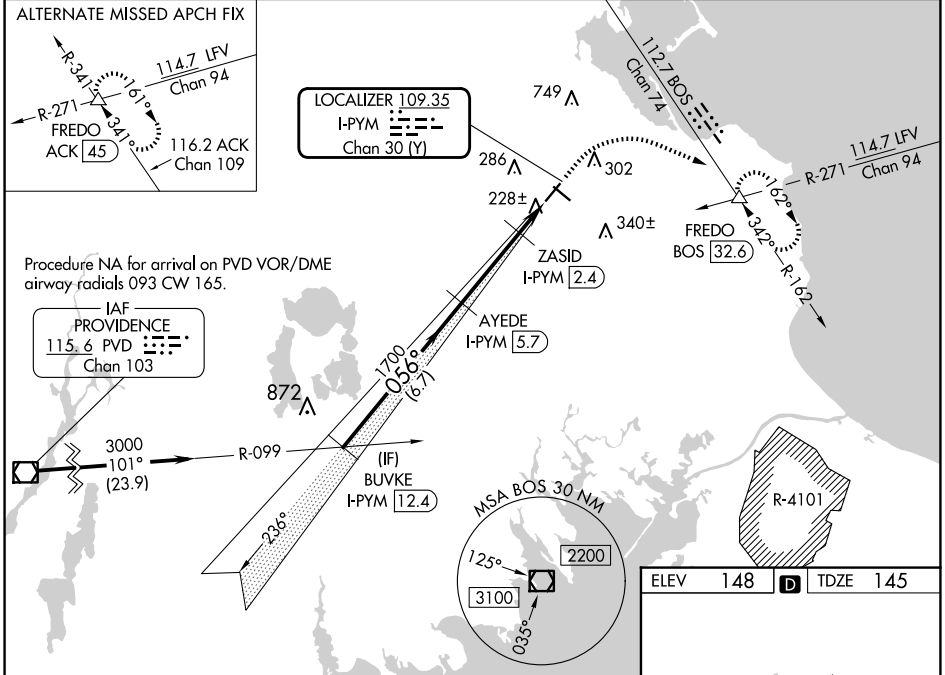
LOC/DME I-PYM 109.35 Chan 30 (Y)	APP CRS 056°	Rwy ldg TDZE Apt Elev	4650 145 148
---	------------------------	-----------------------------	---

ILS or LOC RWY 6

PLYMOUTH MUNI (PYM)

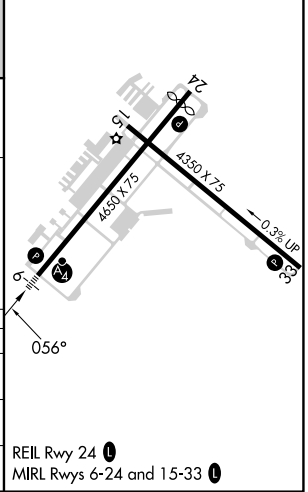
RNP APCH - GPS. From PVD VOR/DME. DME required for LOC only. Aircraft not GPS equipped - RADAR required for procedure entry.	MALSF 	MISSED APPROACH: Climb to 640 then climbing right turn to 2000 on heading 100° and on BOS VOR/DME R-162 to FREDO INT/BOS 32.6 DME and hold.
<p>▼ Circling Rwy 15 NA at night.</p> <p>▲ Rwy 6 helicopter visibility reduction below 3/4 SM NA. For inop ALS, increase S-ILS 6 visibility all Cats to 3/8 SM.</p>		

ASOS 135.625	BOSTON APP CON 118.2 284.6	CLNC DEL 127.75	UNICOM 122.725 (CTAF)	122.9
------------------------	--------------------------------------	---------------------------	---------------------------------	--------------



CATEGORY	A	B	C	D
S-ILS 6	436-3/4	291 (300-3/4)		NA
S-LOC 6	480-3/4	335 (400-3/4)		NA
CIRCLING	620-1	640-1	760-1 3/4	NA
	472 (500-1)	492 (500-1)	612 (700-1 3/4)	

ELEV 148		TDZE 145
----------	--	----------



NE-1, 17 APR 2025 to 15 MAY 2025

NE-1, 17 APR 2025 to 15 MAY 2025