

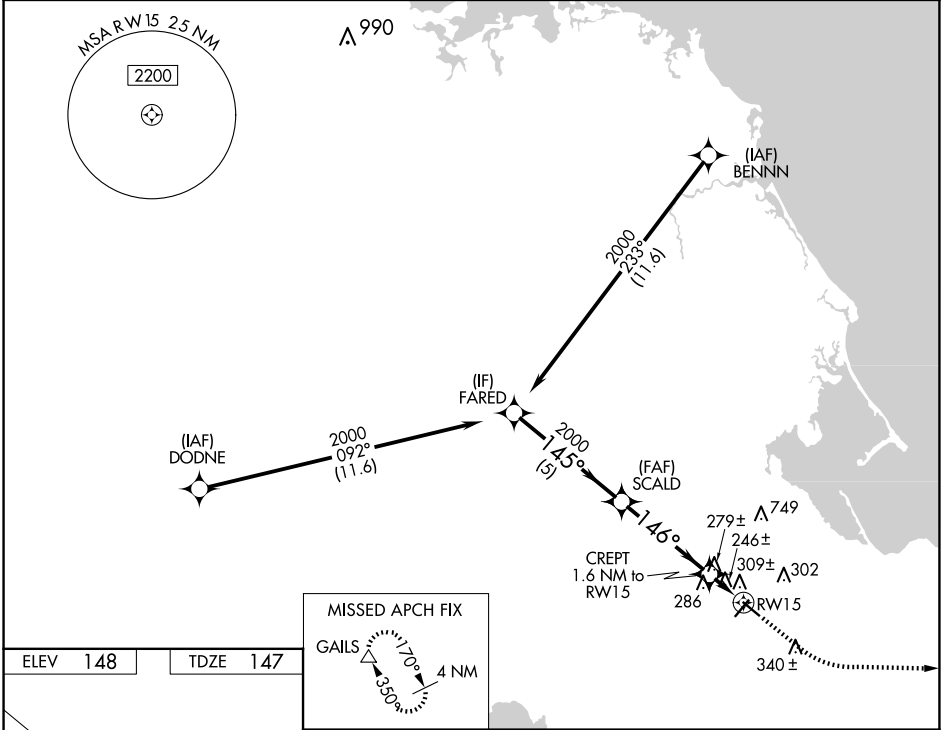
WAAS CH 93639	APP CRS 146°	Rwy Idg TDZE 147	4350
W15A		Apt Elev	148

RNAV (GPS) RWY 15

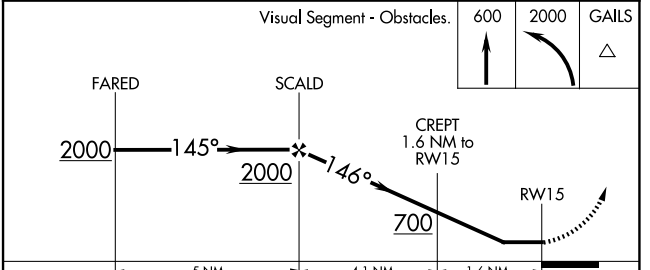
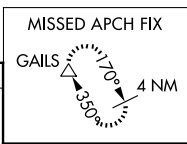
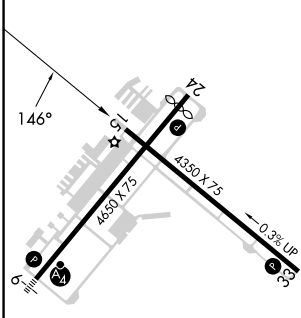
PLYMOUTH MUNI (PYM)

RNP APCH - GPS.	MISSED APPROACH: Climb to 600 then climbing left turn to 2000 direct GAILS and hold.
<p>▼ Rwy 15 helicopter visibility reduction below 1 SM NA.</p> <p>▲ Straight-in Rwy 15 NA at night, Circling Rwy 15 NA at night.</p>	

ASOS 135.625	BOSTON APP CON 118.2 284.6	CLNC DEL 127.75	UNICOM 122.725 (CTAF)	122.9
------------------------	--------------------------------------	---------------------------	---------------------------------	--------------



ELEV 148	TDZE 147
-----------------	-----------------



	5 NM		4.1 NM		1.6 NM		
CATEGORY	A	B	C	D			
LP MDA	500-1 353 (400-1)			NA			
LNAV MDA	560-1	413 (500-1)	560-1 1/8 413 (500-1 1/8)		NA		
CIRCLING	620-1 472 (500-1)	640-1 492 (500-1)	760-1 3/4 612 (700-1 3/4)		NA		

NE-1, 17 APR 2025 to 15 MAY 2025

NE-1, 17 APR 2025 to 15 MAY 2025