

VOR/DME SPW 115.15 Chan 98(Y)	APP CRS 292°	Rwy Idg TDZE Apt Elev	5511 1338 1339
---	------------------------	-----------------------------	---

VOR RWY 30

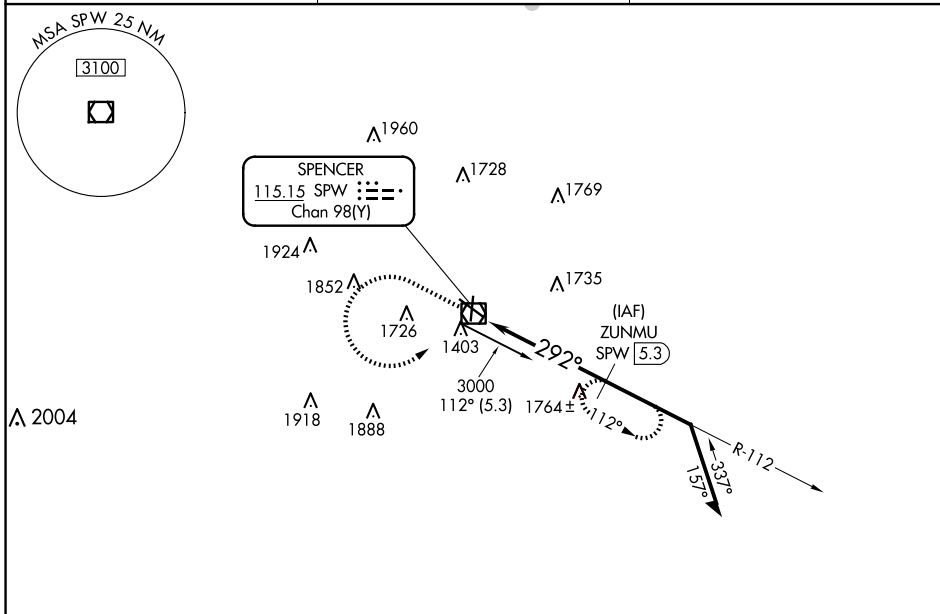
SPENCER MUNI (SPW)

DME required.

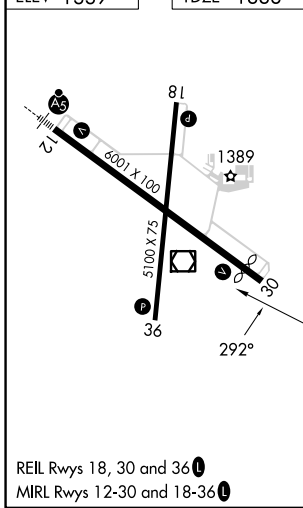
VDP NA when using Estherville altimeter setting.
When local altimeter setting not received, use Estherville altimeter setting and increase all MDA 60 feet and increase S-30 Cat C/D visibility ½ SM and Circling Cat C/D visibility ¼ SM.

MISSED APPROACH: Climb to 3000, then left turn direct SPW VOR/DME, then on SPW VOR/DME R-112 to ZUNMU/SPW 5.3 DME and hold.

ASOS 126.625	MINNEAPOLIS CENTER 127.75 257.7	UNICOM 123.0 (CTAF)
------------------------	---	-------------------------------



ELEV 1339	TDZE 1338
-----------	-----------



3000	SPW R-112	ZUNMU SPW 5.3	ZUNMU SPW 5.3	Remain within 10 NM
SPW VOR/DME	SPW 2.4	≤ 3.01° TCH 40	3000	112°
2.2 NM		2.9 NM		
CATEGORY	A	B	C	D
S-30	2080-1 742 (800-1)	2080-1¼ 742 (800-1¼)	2080-2	742 (800-2)
CIRCLING	2080-1 741 (800-1)	2080-1¼ 741 (800-1¼)	2100-2¼ 761 (800-2¼)	2100-2½ 761 (800-2½)

VGSI and descent angles not coincident (VGSI Angle 3.00/TCH 26).

SPENCER, IOWA
Amdt 3C 28FEB19

43°10'N-95°12'W

SPENCER MUNI (SPW) VOR RWY 30

NC-3, 17 APR 2025 to 15 MAY 2025

NC-3, 17 APR 2025 to 15 MAY 2025