

APP CRS	Rwy Idg	5002
171°	TDZE	1484
	Apt Elev	1488

RNAV (GPS) RWY 17

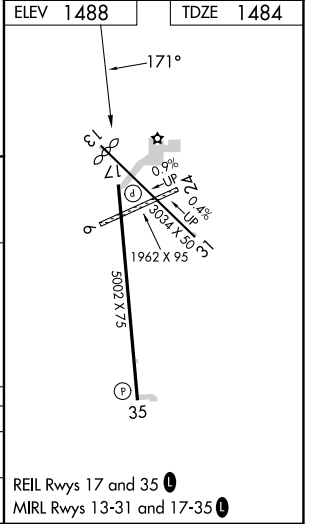
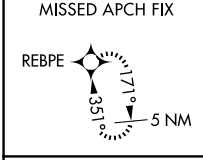
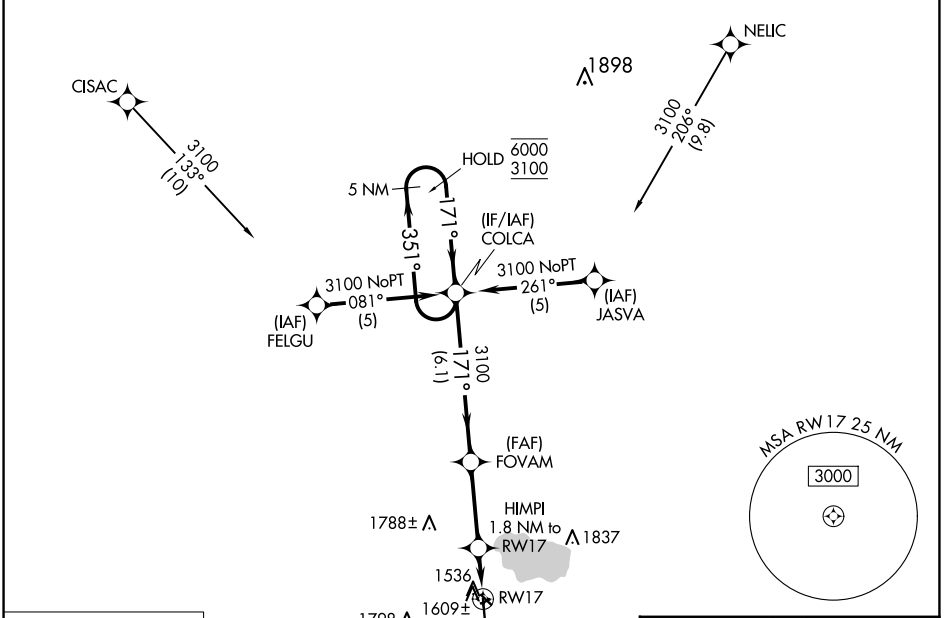
STORM LAKE MUNI (SLB)

RNP APCH - GPS.

⚠ Circling NA to Rwy 6 and 24. Rwy 17 helicopter visibility reduction below 1 SM NA. Straight-in Rwy 17 NA at night, Circling Rwy 13, 17 NA at night.

MISSED APPROACH: Climb to 3100 direct REBPE and hold.

AWOS-3 118.525	MINNEAPOLIS CENTER 134.0 288.3	UNICOM 122.7 (CTAF) 0
--------------------------	--	---------------------------------



	COLCA	FOVAM	3100	REBPE
5 NM Holding Pattern				
6000 ← 351°				
3100 → 171°				
	171°	3.05° TCH 30		
	3100			
		HIMPI 1.8 NM to RWY 17		
			RWY 17	
			2100	
	6.1 NM	3.1 NM	1.8 NM	
CATEGORY	A	B	C	D
RNAV MDA	1860-1	376 (400-1)		NA
CIRCLING	1920-1 432 (500-1)	1940-1 452 (500-1)		NA

NC-3, 17 APR 2025 to 15 MAY 2025

NC-3, 17 APR 2025 to 15 MAY 2025