

WAAS CH <b>40030</b> <b>W26A</b>	APP CRS <b>256°</b>	Rwy Idg <b>2810</b> TDZE <b>523</b> Apt Elev <b>523</b>
--	------------------------	---

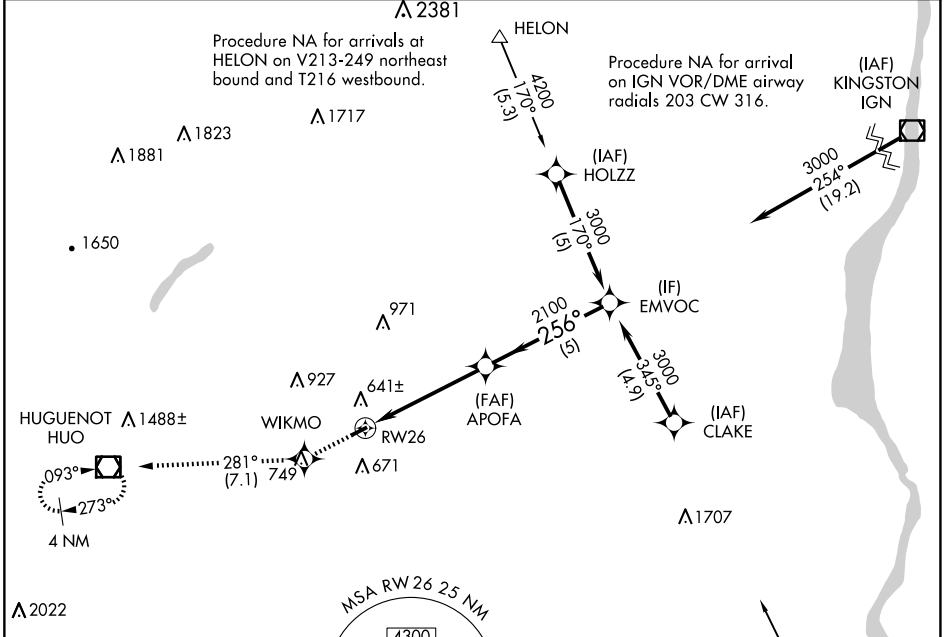
# RNAV (GPS) RWY 26

RANDALL (Ø6N)

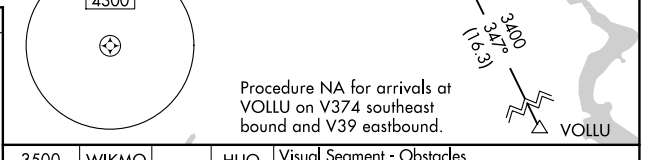
RNP APCH. Procedure NA at night. Rwy 26 helicopter visibility reduction below 1 SM NA. Use Newburgh altimeter setting; when not received, use Montgomery altimeter setting.

MISSED APPROACH: Climb to 3500 direct WIKMO and on track 281° to HVO VOR/DME and hold, continue climb-in-hold to 3500.

NEW YORK APP CON <b>132.75 363.1</b>	UNICOM <b>122.8 (CTAF) 0</b>
---	---------------------------------



ELEV 523	TDZE 523
----------	----------



3500	WIKMO	tr 281°	HVO	Visual Segment - Obstacles.	EMVOC
				APOFA	
	RW26			2100	3000
		4.9 NM		5 NM	
CATEGORY	A	B	C	D	
LP MDA	1020-1 497 (500-1)		NA		
LNAV MDA	1060-1 537 (600-1)		NA		
CIRCLING	1080-1 557 (600-1)		NA		

NE-2, 17 APR 2025 to 15 MAY 2025

NE-2, 17 APR 2025 to 15 MAY 2025