

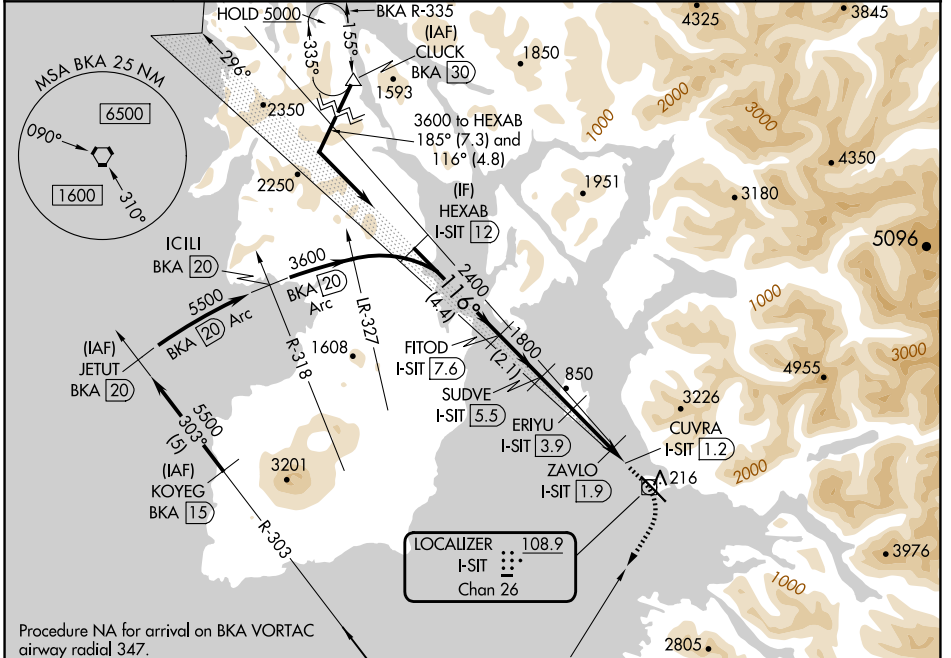
LOC/DME I-SIT 108.9 Chan 26	APP CRS 116°	Rwy Idg TDZE Apt Elev	6500 24 27
--	------------------------	-----------------------------	---------------------------------------

LDA RWY 11

SITKA ROCKY GUTIERREZ (SIT)(PASI)

DME required.		MISSED APPROACH: Climb to 600 then climbing right turn to 5500 on heading 192° and BKA VORTAC R-012 to BKA VORTAC and hold, continue climb-in-hold to 5500.	
<p>▼ When local altimeter setting not received, procedure NA.</p> <p>▲ Circling NA northeast of Rwy 11-29.</p>			

AFIS 135.9	ANCHORAGE CENTER 126.1 335.5	SITKA RADIO 123.6 (CTAF) 0 122.2	UNICOM 122.95
----------------------	--	--	-------------------------



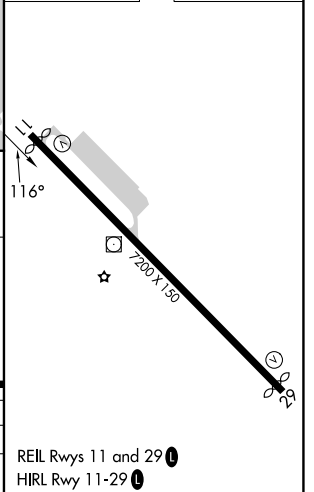
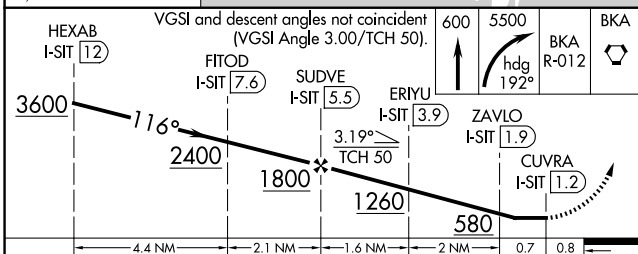
MISSED APCH FIX

BIORKA ISLAND
BKA [III] [III] [III]
113.8
Chan 85

R-189

BIORKA ISLAND
113.8 BKA [III] [III] [III]
Chan 85

ELEV 27	D	TDZE 24
---------	----------	---------



CATEGORY	A	B	C	D
S-11	520-1 496 (500-1)		520-1 3/8 496 (500-1 3/8)	
C CIRCLING	520-1 493 (500-1)		540-1 1/2 513 (600-1 1/2)	1500-3 1473 (1500-3)

REIL Rwy 11 and 29 **(1)**
HIRL Rwy 11-29 **(1)**

AK, 17 APR 2025 to 12 JUN 2025

AK, 17 APR 2025 to 12 JUN 2025