

WAAS CH <b>56632</b>	APP CRS <b>115°</b>	Rwy Idg TDZE Apt Elev	<b>6500</b> <b>24</b> <b>27</b>
-------------------------	------------------------	-----------------------------	---------------------------------------

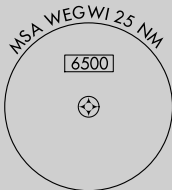
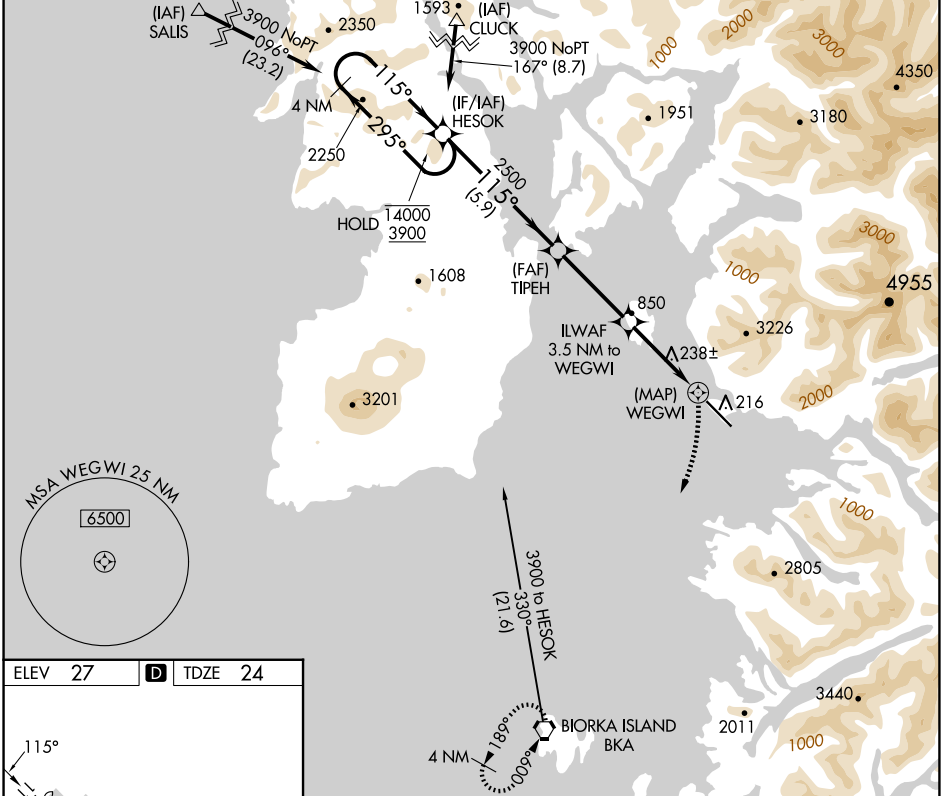
# RNAV (GPS) RWY 11

SITKA ROCKY GUTIERREZ (SIT)(PASI)

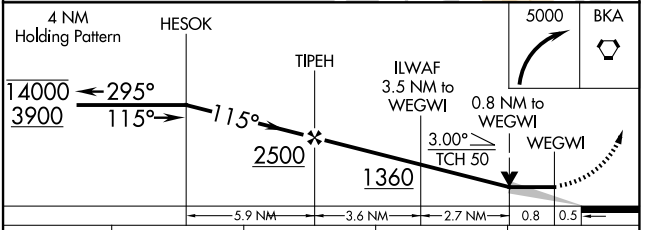
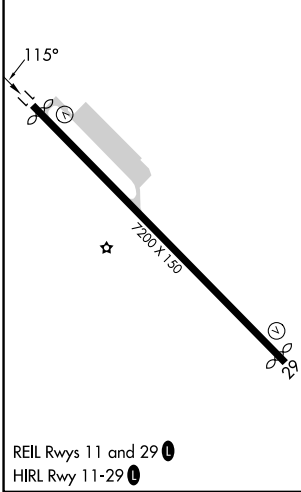
**RNP APCH.**  
 ▼ When local altimeter setting not received, procedure NA.  
 ▲ Circling NA northeast of Rwy 11-29.

**MISSED APPROACH:** Climbing right turn to 5000 direct BKA VORTAC and hold, continue climb-in-hold to 5000.

AFIS <b>135.9</b>	ANCHORAGE CENTER <b>126.1 335.5</b>	SITKA RADIO <b>123.6 (CTAF) 122.2</b>	UNICOM <b>122.95</b>
----------------------	--	--	-------------------------



ELEV 27	<b>D</b> TDZE 24
---------	------------------



CATEGORY	A	B	C	D
LP MDA	500-1	476 (500-1)	500-1 <sup>3</sup> / <sub>8</sub>	476 (500-1 <sup>1</sup> / <sub>2</sub> )
LNAV MDA	1300-1 <sup>1</sup> / <sub>4</sub> 1276 (1300-1 <sup>1</sup> / <sub>4</sub> )	1300-1 <sup>1</sup> / <sub>2</sub> 1276 (1300-1 <sup>1</sup> / <sub>2</sub> )	1300-3	1276 (1300-3)
<b>C</b> CIRCLING	1300-1 <sup>1</sup> / <sub>4</sub> 1273 (1300-1 <sup>1</sup> / <sub>4</sub> )	1300-1 <sup>1</sup> / <sub>2</sub> 1273 (1300-1 <sup>1</sup> / <sub>2</sub> )	1300-3 1273 (1300-3)	1660-3 1633 (1700-3)

SITKA, ALASKA  
 Amdt 2 16JUL20

57°03'N-135°22'W

# RNAV (GPS) RWY 11

AK, 17 APR 2025 to 12 JUN 2025

AK, 17 APR 2025 to 12 JUN 2025