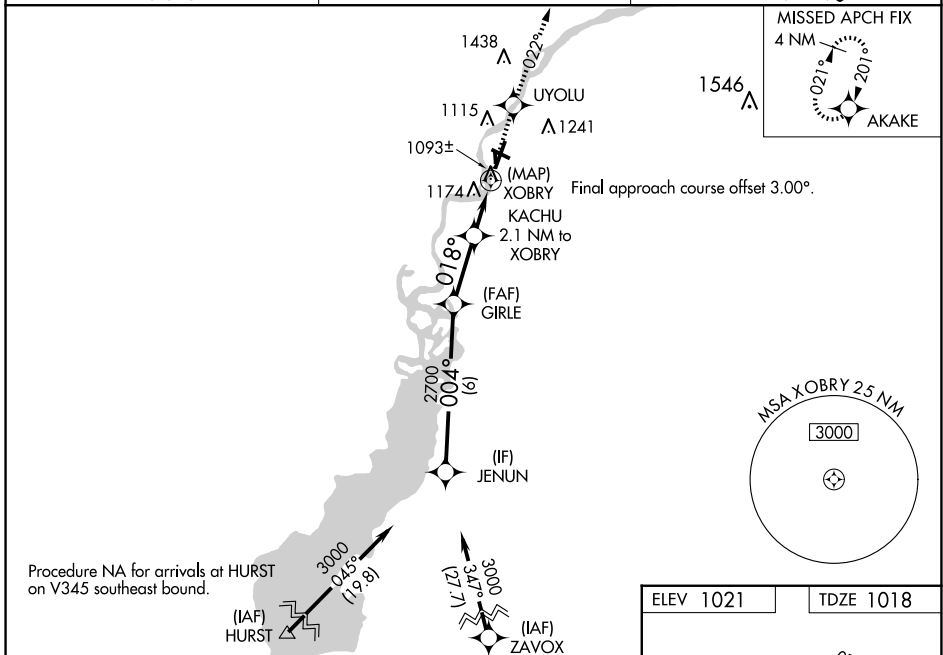


WAAS CH 77731 W02A	APP CRS 018°	Rwy Idg TDZE Apt Elev	5500 1018 1021
--	------------------------	-----------------------------	---

RNAV (GPS) RWY 2

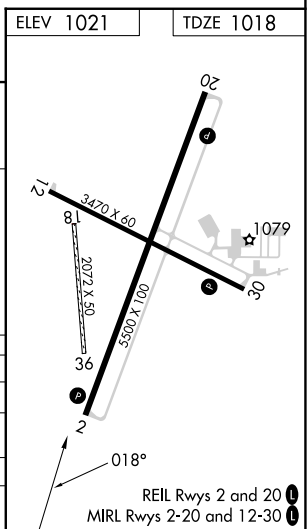
ALEXANDER FLD SOUTH WOOD COUNTY (ISW)

RNP APCH - GPS.		MISSED APPROACH: Climb to 3000 direct UYOLU and on track 022° to AKAKE and hold.
ASOS 126.575	MINNEAPOLIS CENTER 124.4 317.7	UNICOM 122.8 (CTAF) 0



VGSI and RNAV glidepath not coincident (VGSI Angle 3.00/TCH 35).

3000	UYOLU	tr 022°	AKAKE	
JENUN	GIRLE	KACHU 2.1 NM to XOBRY	XOBRY	
3000	2700	1880		
GP 3.00° TCH 50	004°	018°		
6 NM 2.6 NM 1.4 0.7 0.5				
CATEGORY	A	B	C	D
LPV DA	1298-1		280 (300-1)	
LNAV/VNAV DA	1493-1 $\frac{3}{8}$		475 (500-1 $\frac{5}{8}$)	
LNAV MDA	1440-1	422 (500-1)	1440-1 $\frac{1}{4}$	422 (500-1 $\frac{1}{4}$)
C CIRCLING	1480-1 459 (500-1)	1560-1 539 (600-1)	1620-1 $\frac{1}{2}$ 599 (600-1 $\frac{1}{2}$)	1800-2 $\frac{1}{2}$ 779 (800-2 $\frac{1}{2}$)



EC-3, 17 APR 2025 to 15 MAY 2025

EC-3, 17 APR 2025 to 15 MAY 2025