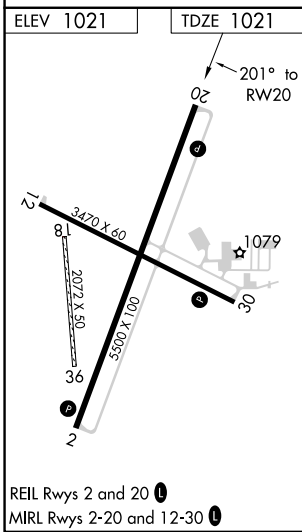
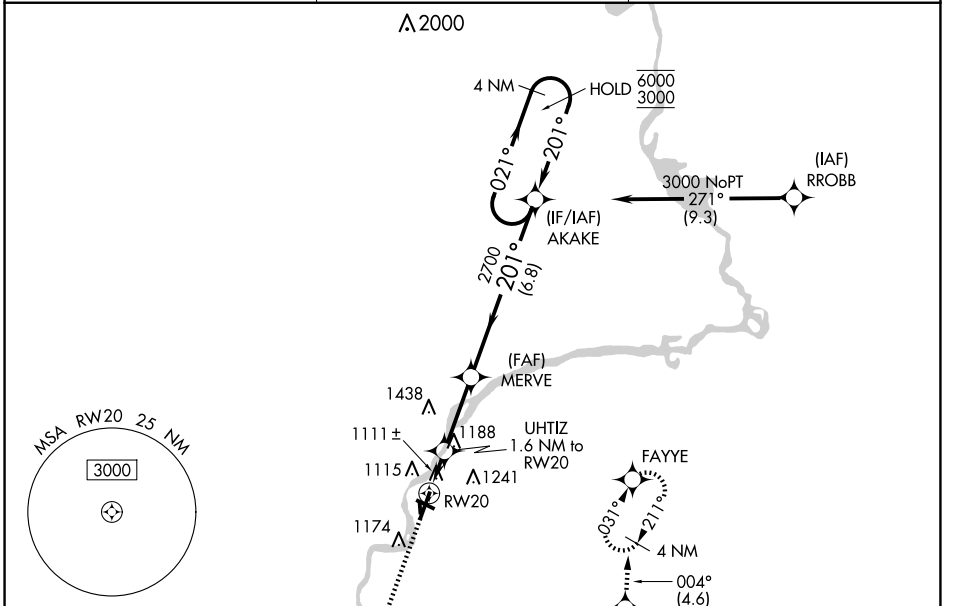


APP CRS	Rwy Idg	5500
201°	TDZE	1021
	Apt Elev	1021

RNAV (GPS) RWY 20

ALEXANDER FLD SOUTH WOOD COUNTY (ISW)

RNP APCH.		MISSED APPROACH: Climb to 3000 direct WEMUG and on track 117° to OCEDE and on track 049° to LHALL and on track 004° to FAYYE and hold.
<p>▼ Circling NA to Rwy 18 and 36. ▲ Rwy 20 helicopter visibility reduction below 1 SM NA. ▲ Straight-in Rwy 20 NA at night, Circling Rwy 20, 30 NA at night.</p>		
ASOS 126.575	MINNEAPOLIS CENTER 124.4 317.7	UNICOM 122.8 (CTAF)



3000	WEMUG	tr 117°	OCEDE	tr 049°	LHALL	tr 004°	FAYYE	4 NM Holding Pattern
	UHTIZ	1.6 NM to RW20	MERVE	AKAKE				
	RW20	1640	2700	6000	3000			
	1.6 NM	2.8 NM	6.8 NM					
CATEGORY	A	B	C	D				
LNAV MDA	1380-1				359 (400-1)			
CIRCLING	1480-1 459 (500-1)	1560-1 539 (600-1)	1620-1½ 599 (600-1½)	1800-2½ 779 (800-2½)				

EC-3, 17 APR 2025 to 15 MAY 2025

EC-3, 17 APR 2025 to 15 MAY 2025