

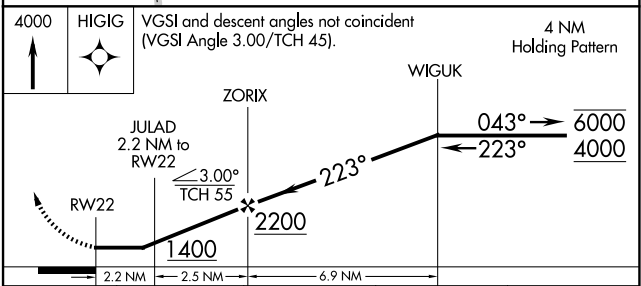
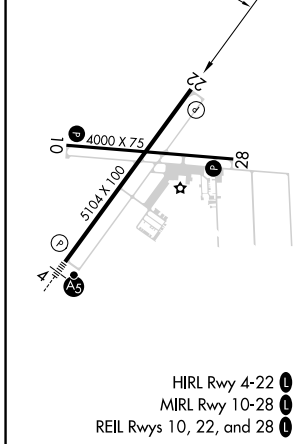
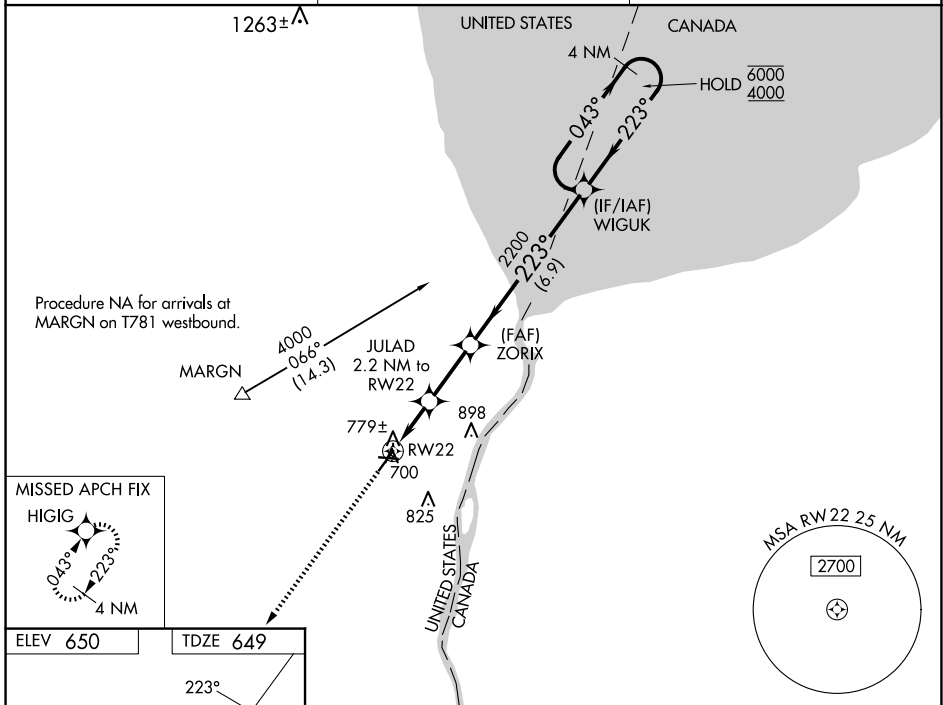
WAAS CH 97723 W22A	APP CRS 223°	Rwy ldg 5104 TDZE 649 Apt Elev 650
--	------------------------	---

RNAV (GPS) RWY 22

ST CLAIR COUNTY INTL (PHN)

RNP APCH.	MISSED APPROACH: Climb to 4000 direct HIGIG and hold, continue climb-in-hold to 4000.
<p>▽ Rwy 22 helicopter visibility reduction below 1 SM NA.</p> <p>▲ Straight-in Rwy 22 NA at night, Circling Rwy 10, 22, 28 NA at night.</p>	

AWOS-3 118.375	SELFRRIDGE APP CON ★ 119.6 391.9	UNICOM 123.05 (CTAF) 0
--------------------------	--	----------------------------------



4000	HIGIG	VGSI and descent angles not coincident (VGSI Angle 3.00/TCH 45).		4 NM Holding Pattern	
RWY 22		JULAD 2.2 NM to RWY 22	ZORIX	WIGUK	
2.2 NM		2.5 NM	6.9 NM		
1400	2200	6000	4000		
CATEGORY		A	B	C	D
LP	MDA	1020-1 371 (400-1)			
LP	MDA	1040-1 391 (400-1)		1040-1½ 391 (400-1½)	
C	CIRCLING	1160-1 510 (600-1)		1260-1¾ 610 (700-1¾)	1260-2 610 (700-2)

EC-1, 17 APR 2025 to 15 MAY 2025

EC-1, 17 APR 2025 to 15 MAY 2025