

VOR/DME BJC <b>115.4</b> Chan <b>101</b>	APP CRS <b>284°</b>	Rwy Idg <b>7002</b>	30L <b>9000</b>	30R <b>5599</b>
		TDZE <b>5628</b>	<b>5599</b>	
		Apt Elev <b>5673</b>	<b>5673</b>	

# VOR/DME RWY 30L/R

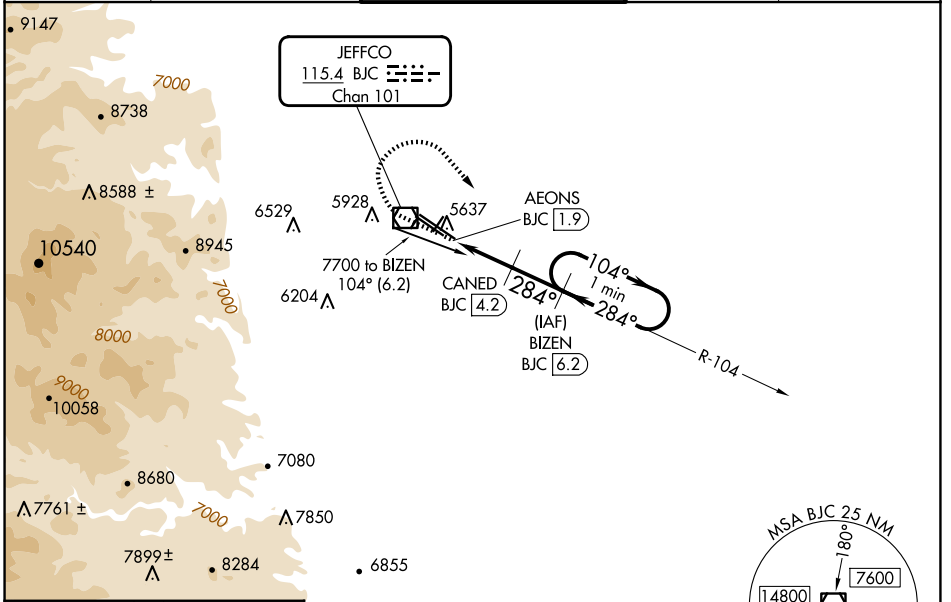
ROCKY MOUNTAIN METRO (BJC)

**NA** When local altimeter setting not received, use Denver Intl altimeter setting and increase all MDA 100 feet. Increase S-30L Cats C/D visibility to 1 mile and Circling Cat C to 2¼ mile. For inoperative MALSRS, increase S-30R all Cats visibility to 1 mile. For inoperative MALSRS, when using Denver Intl altimeter setting, increase S-30R Cats C/D visibility to 1½ mile.

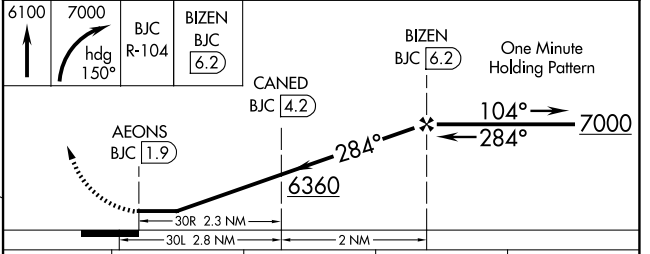
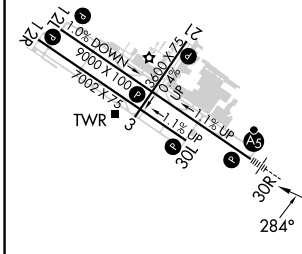
**MALSRS**  
Rwy 30R

**MISSED APPROACH:** Climb to 6100 then climbing right turn to 7000 on heading 150° and on BJC VOR/DME R-104 to BIZEN/BJC 6.2 DME and hold.

ATIS <b>126.25</b>	DENVER APP CON <b>125.12 263.02</b>	METRO TOWER * <b>118.6(CTAF) 233.7</b>	GND CON <b>121.7</b>	CLNC DEL <b>132.6</b>
-----------------------	--	---	-------------------------	--------------------------



ELEV 5673	<b>D</b> TDZE 30L 5628
	TDZE 30R 5599



CATEGORY	A	B	C	D
S-30R	5920-½	321 (300-½)	5920-¾	321 (300-¾)
S-30L	5920-1	292 (300-1)	5920-7/8	292 (300-7/8)
<b>C</b> CIRCLING	6180-1 507 (600-1)	6240-1 567 (600-1)	6360-2 687 (700-2)	6860-3 1187 (1200-3)

HIRL Rwy 12L-30R **L**  
MIRL Rwy 3-21 and 12R-30L **L**  
REL Rwy 12L, 12R and 30L **L**

SW-1, 17 APR 2025 to 15 MAY 2025

SW-1, 17 APR 2025 to 15 MAY 2025