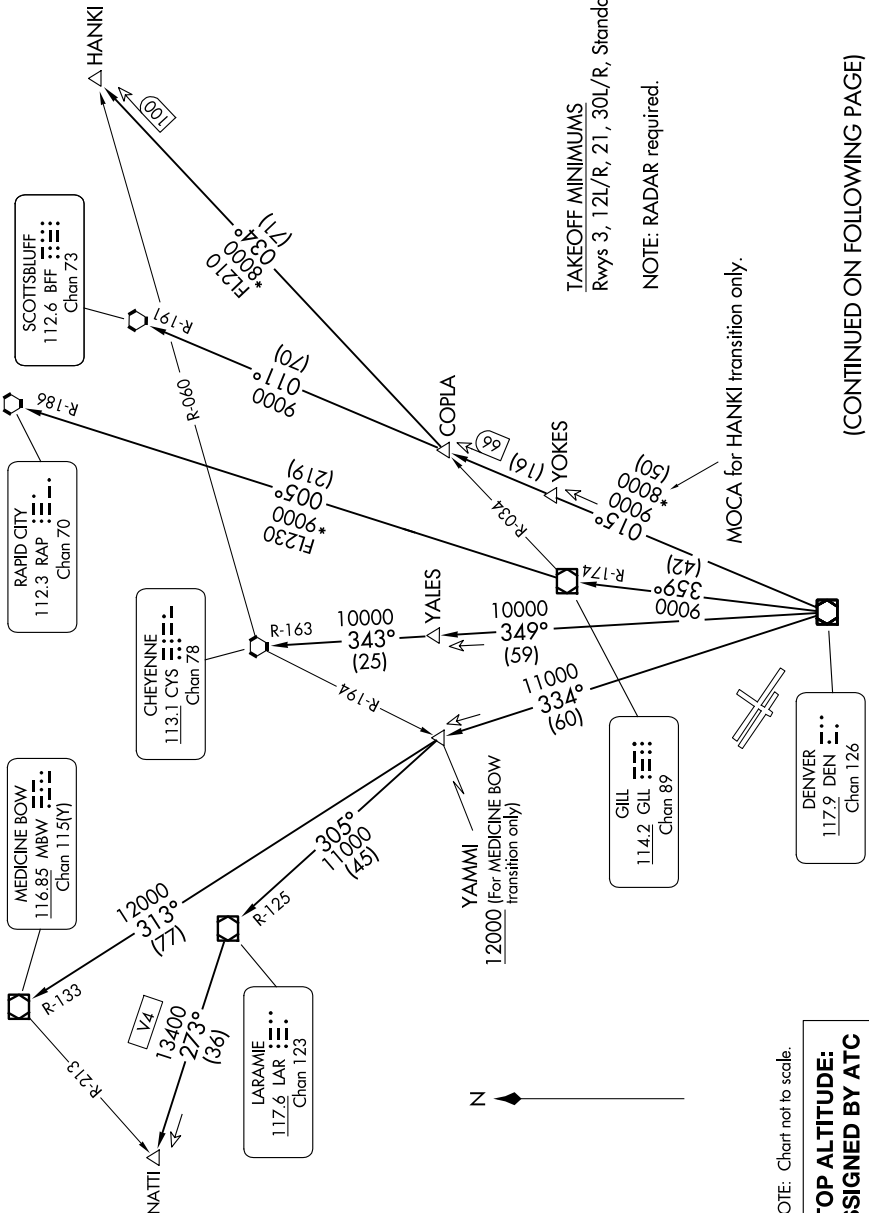


SW-1, 17 APR 2025 to 15 MAY 2025

DENVER DEP CON
125.12 263.02

ATIS
126.25
CLNC.DEL
132.6



TAKEOFF MINIMUMS
Rwys 3, 12L/R, 21, 30L/R, Standard.

NOTE: RADAR required.

MOCA for HANKI transition only.

(CONTINUED ON FOLLOWING PAGE)

NOTE: Chart not to scale.

**TOP ALTITUDE:
ASSIGNED BY ATC**

SW-1, 17 APR 2025 to 15 MAY 2025