

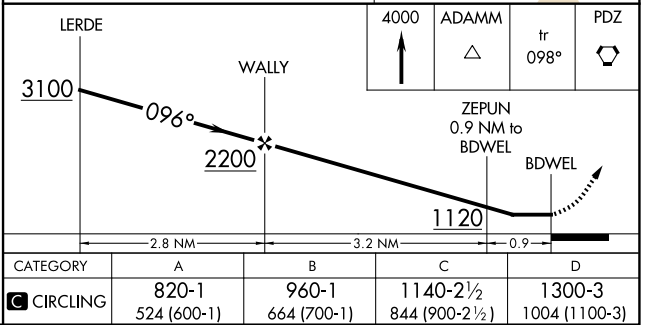
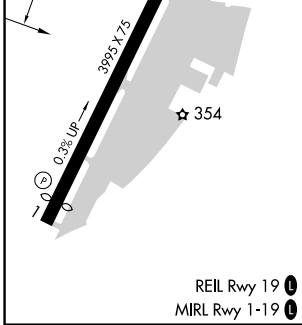
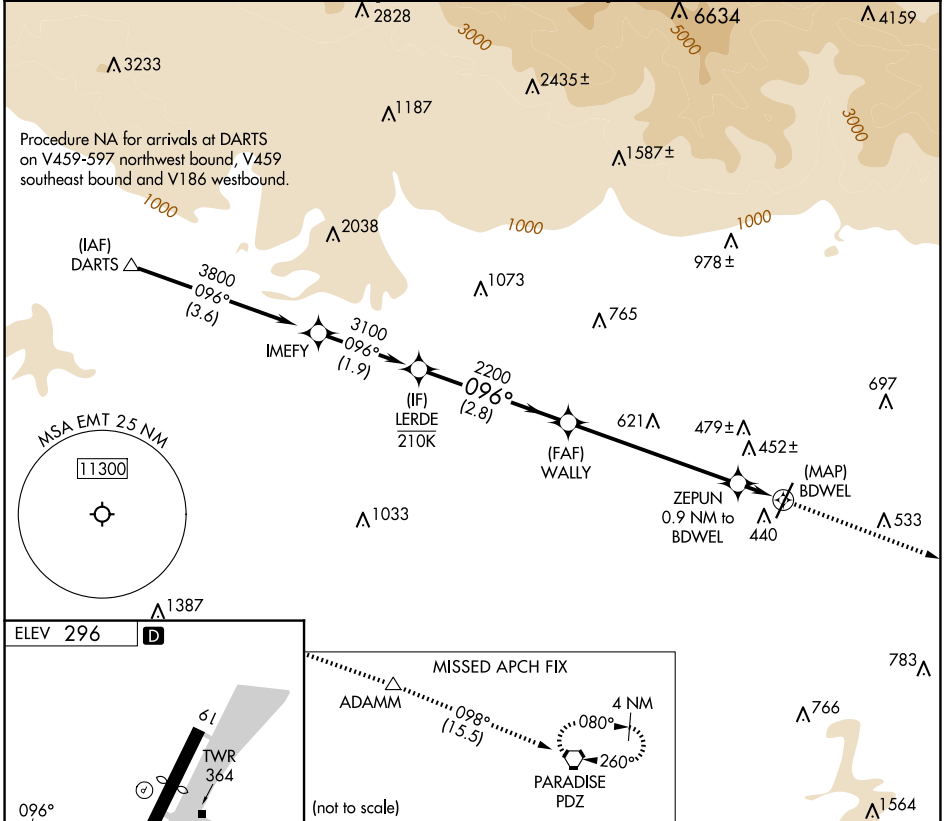
APP CRS	Rwy Idg	N/A
096°	TDZE	N/A
	Apt Elev	296

RNAV (GPS)-B

SAN GABRIEL VALLEY (EMT)

RNP APCH-GPS.		MISSED APPROACH: Climb to 4000 direct ADAMM and on track 098° to PDZ VORTAC and hold.		
Circling Rwy 1 NA at night. Rwy 1, 19 helicopter visibility reduction below 1 SM NA.				

ATIS 118.75	SOCAL APP CON 125.5 349.0	EL MONTE TOWER * 121.2 (CTAF)	GND CON 125.9	UNICOM 122.95
-----------------------	-------------------------------------	-----------------------------------------	-------------------------	-------------------------



SW-3, 17 APR 2025 to 15 MAY 2025

SW-3, 17 APR 2025 to 15 MAY 2025