

APP CRS	Rwy Idg	<b>2900</b>
<b>067°</b>	TDZE	<b>558</b>
	Apt Elev	<b>560</b>

# RNAV (GPS) RWY 7

SKY MANOR (N40)

RNP APCH

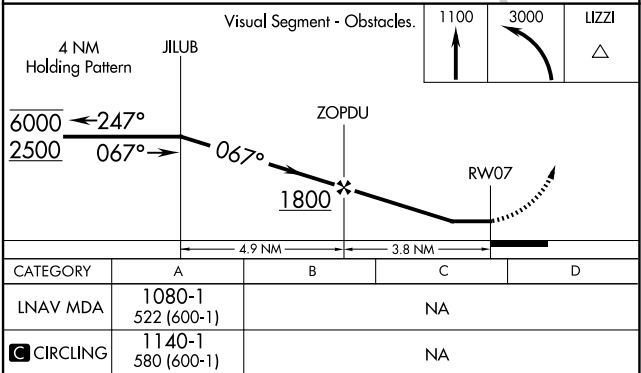
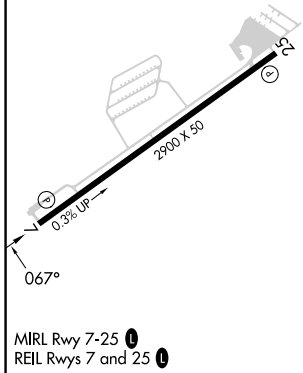
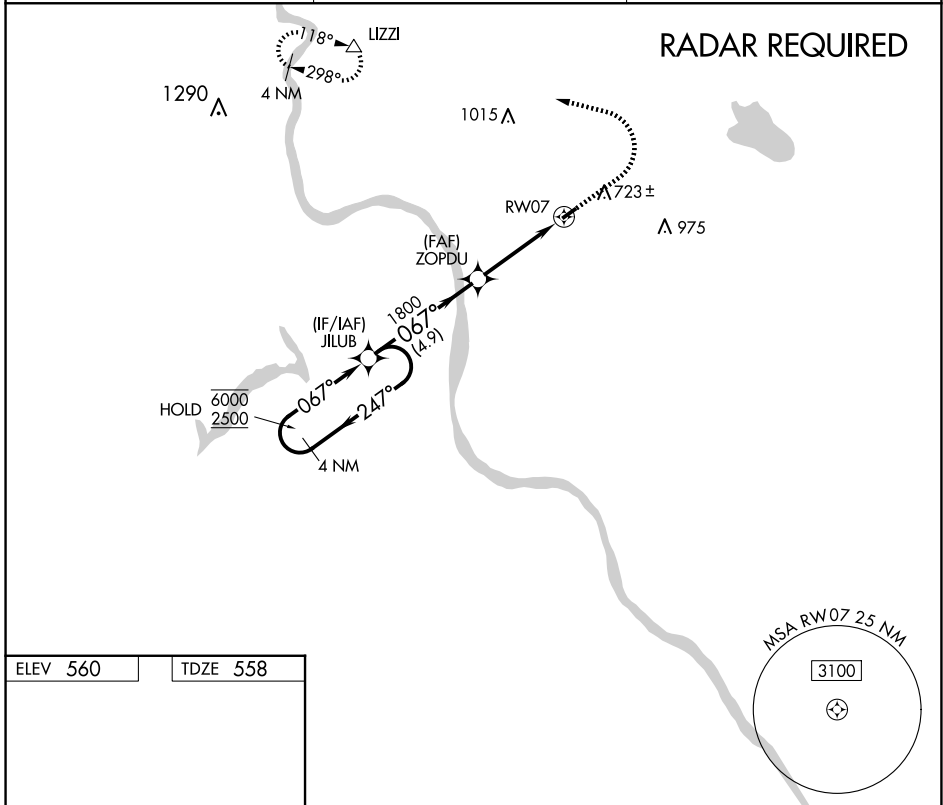
Procedure NA at night. When local altimeter setting not received, use Lehigh Valley Intl altimeter setting. Rwy 7 helicopter visibility reduction below 1 SM NA.

MISSED APPROACH: Climb to 1100 then climbing left turn to 3000 direct IZZI and hold.

AWOS-3  
**121.725**

ALLENTOWN APP CON  
**119.65 124.45 351.8**

UNICOM  
**122.975 (CTAF) 0**



NE-2, 17 APR 2025 to 15 MAY 2025

NE-2, 17 APR 2025 to 15 MAY 2025