

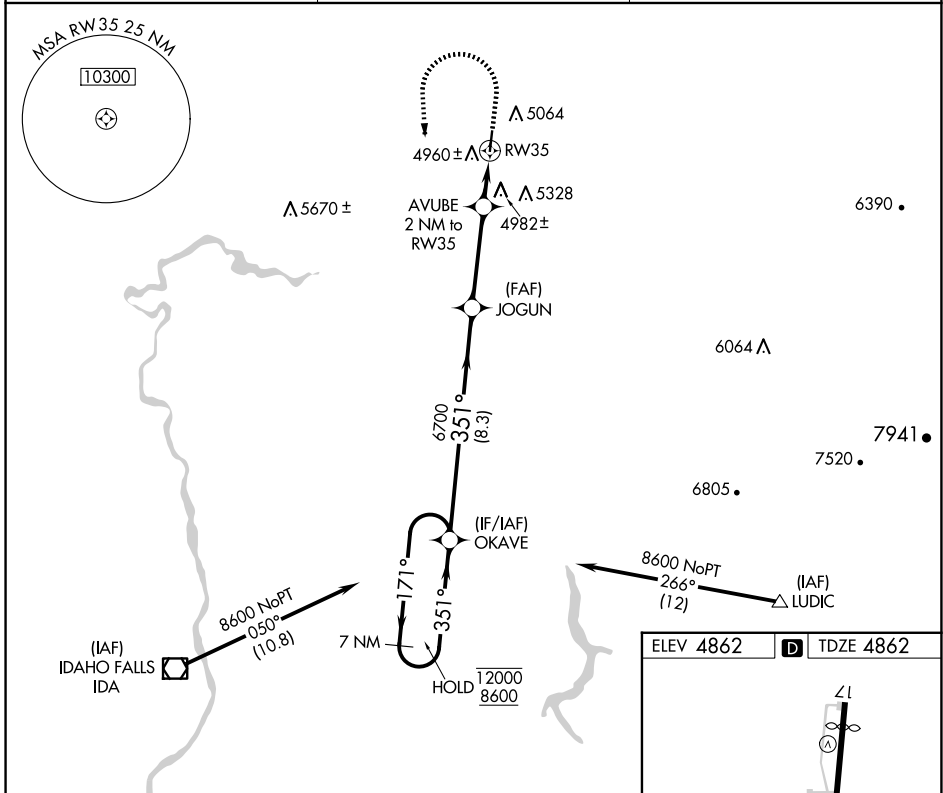
APP CRS 351°	Rwy Idg TDZE Apt Elev	3900 4862 4862
------------------------	-----------------------------	---

RNAV (GPS) RWY 35

REXBURG-MADISON COUNTY (R.X.E)

RNP APCH - GPS.	MISSED APPROACH: Climb to 5900 then climbing left turn to 8600 direct OKAVE and hold.
Rwy 35 helicopter visibility reduction below 3/4 SM NA.	

ASOS 135.075	SALT LAKE CENTER 128.35 239.25	UNICOM 122.8 (CTAF) 0
------------------------	--	---------------------------------



NW-1, 17 APR 2025 to 15 MAY 2025

NW-1, 17 APR 2025 to 15 MAY 2025

	OKAVE	JOGUN	AVUBE 2 NM to RW35	OKAVE
7 NM Holding Pattern				
12000 8600	← 171°	351° →	351°	351°
		3.00° TCH 40	6700	5540
	8.3 NM	3.6 NM	0.9 NM	1.1 NM
CATEGORY	A	B	C	D
LNAV MDA	5240-1 378 (400-1)			
CIRCLING	5380-1 518 (600-1)	5580-1 718 (800-1)	5680-2½ 818 (900-2½)	5760-3 898 (900-3)

