

VORTAC PLN 111.8 Chan 55	APP CRS 082°	Rwy Idg 4004 TDZE 640 Apt Elev 640
----------------------------------------------	------------------------	---------------------------------------------------------------

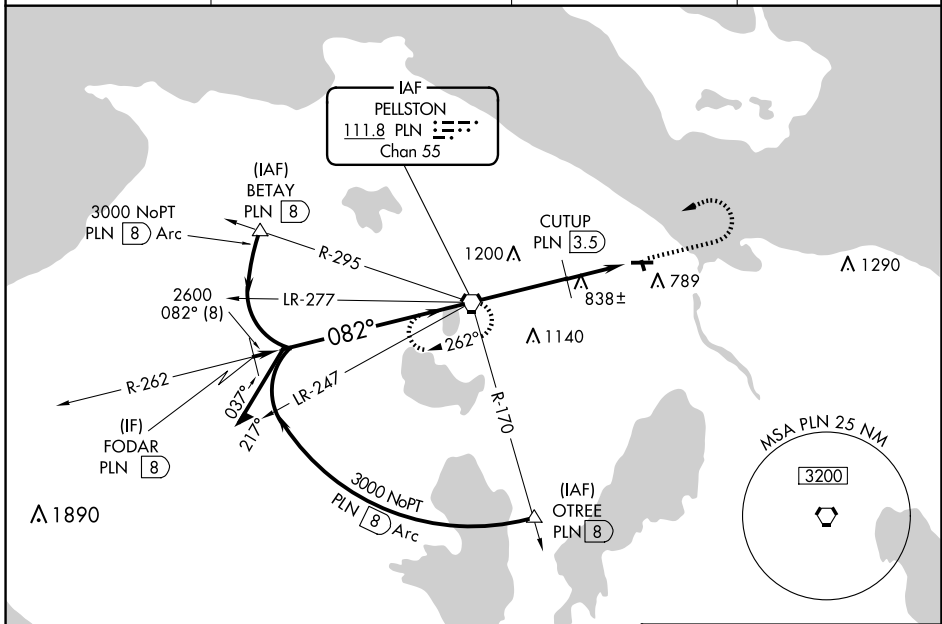
VOR RWY 10

CHEBOYGAN COUNTY (SLH)

▼ Helicopter visibility reduction below 1 SM NA. Night landing Rwy 10, 17, 35 NA. When local altimeter setting not received, use Pellston altimeter setting; increase all MDA 60 feet; increase S-10 Cat B visibility ¼ SM, S-10 Cat C visibility ½ SM, Circling Cat B visibility ¼ SM and Circling Cat C visibility ½ SM; increase CUTUP fix minimums S-10 Cat C visibility ½ SM.

MISSED APPROACH:
Climb to 2800 then left turn direct PLN VORTAC and hold.

AWOS-3 118.175	MINNEAPOLIS CENTER 134.6 354.05	UNICOM 122.8 (CTAF)	122.5 0
--------------------------	-------------------------------------------	-------------------------------	----------------



EC-1, 17 APR 2025 to 15 MAY 2025

EC-1, 17 APR 2025 to 15 MAY 2025

Remain within 10 NM		PLN VORTAC		ELEV 640		TDZE 640	
3000		2600		2800		PLN 5.9	
262°		082°		*1420 when using Pellston altimeter setting		082° 5.9 NM from FAF	
082°		3.05° TCH 40		CUTUP PLN 3.5		4004 X 75	
2600		3.5 NM		*1360		1874 X 35	
VGSI and descent angles not coincident (VGSI Angle 4.00/TCH 25).		2.4 NM		PLN 5.9		0.3% UP	
CATEGORY	A	B	C	D	REIL Rws 10 and 28		
S-10	1360-1	720 (800-1)	1360-2	720 (800-2)	MIRL Rwy 10-28 and 17-35		
CIRCLING	1360-1	720 (800-1)	1360-2	720 (800-2)	FAF to MAP 5.9 NM		
CUTUP FIX MINIMUMS							
S-10	1100-1	460 (500-1)	1100-1 3/8	460 (500-1 3/8)	Knots		
CIRCLING	1140-1	500 (500-1)	1140-1 1/2	500 (500-1 1/2)	60	90	120
					150	180	
					Min:Sec	5:54	3:56
						2:57	2:22
						1:58	