

(TJANO1.TJANO) 24025

AL-6114 (FAA)

# TJANO ONE DEPARTURE (RNAV)

PLEASANTON MUNI (PEZ)  
PLEASANTON, TEXAS

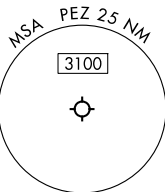
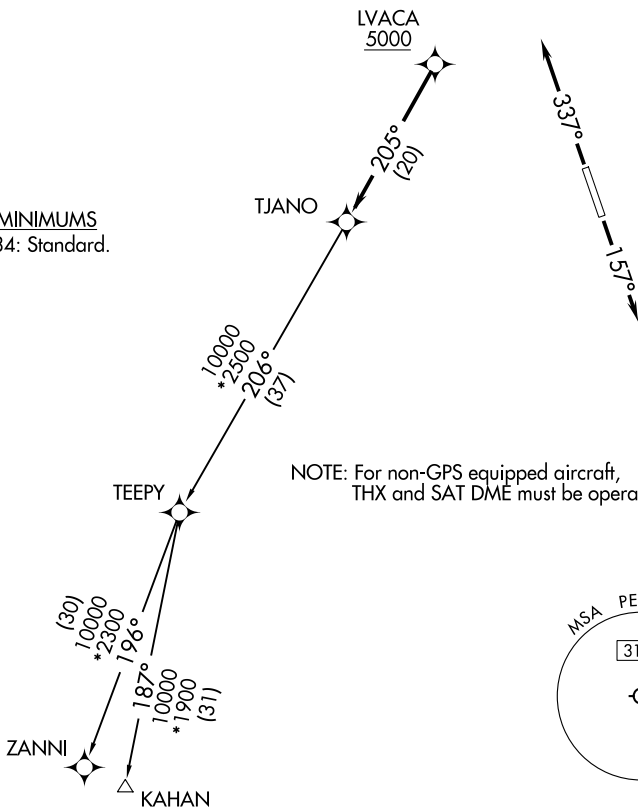
SAN ANTONIO DEP CON  
125.7 290.225  
CLNC DEL  
121.375

RNAV 1 - DME/DME IRU or GPS.

RADAR required.

**TOP ALTITUDE:  
ASSIGNED BY ATC**

TAKEOFF MINIMUMS  
Rwys 16, 34: Standard.



Note: Chart not to scale.



## DEPARTURE ROUTE DESCRIPTION

TAKEOFF RUNWAY 16: Climb on heading 157° or as assigned by ATC, for vectors to LVACA, then . . . .

TAKEOFF RUNWAY 34: Climb on heading 337° or as assigned by ATC, for vectors to LVACA, then . . . .

. . . . on track 205° to TJANO, then on Transition. Maintain ATC assigned altitude.

KAHAN TRANSITION (TJANO1.KAHAN)

ZANNI TRANSITION (TJANO1.ZANNI)

**TJANO ONE DEPARTURE (RNAV)**  
(TJANO1.TJANO) 25JAN24

PLEASANTON, TEXAS  
PLEASANTON MUNI (PEZ)

SC-3, 17 APR 2025 to 15 MAY 2025

SC-3, 17 APR 2025 to 15 MAY 2025