

(YODUH1.YODUH) 24025

AL-6114 (FAA)

PLEASANTON MUNI (PEZ)
PLEASANTON, TEXAS

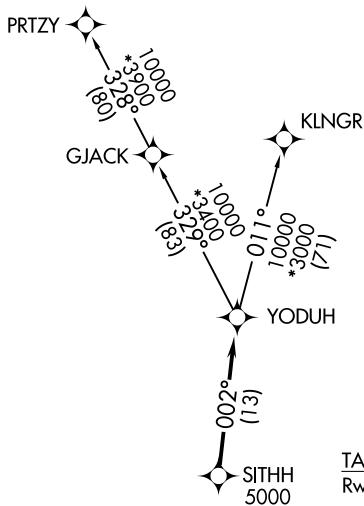
YODUH ONE DEPARTURE (RNAV)

RNAV 1 - DME/DME IRU or GPS.

**TOP ALTITUDE:
ASSIGNED BY ATC**

RADAR required.

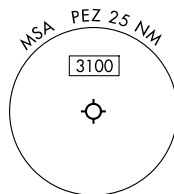
SAN ANTONIO DEP CON
125.7 290.225
CLNC DEL
121.375



TAKEOFF MINIMUMS
Rwys 16, 34: Standard.



NOTE: Aircraft destined for airports north/northeast of DFW terminal area must file the KLNGR Transition.



NOTE: Chart not to scale.



DEPARTURE ROUTE DESCRIPTION

TAKEOFF RUNWAY 16: Climb on heading 157° or as assigned by ATC, for vectors to SITHH, thence . . .

TAKEOFF RUNWAY 34: Climb on heading 337° or as assigned by ATC, for vectors to SITHH, thence . . .

. . . on track 002° to YODUH, then on Transition. Maintain ATC assigned altitude.

KLNGR TRANSITION (YODUH1.KLNGR)
PRTZY TRANSITION (YODUH1.PRTZY)

YODUH ONE DEPARTURE (RNAV)
(YODUH1.YODUH) 25JAN24

PLEASANTON, TEXAS
PLEASANTON MUNI (PEZ)

SC-3, 17 APR 2025 to 15 MAY 2025

SC-3, 17 APR 2025 to 15 MAY 2025