

APP CRS	Rwy Idg	<b>3002</b>
<b>087°</b>	TDZE	<b>146</b>
	Apt Elev	<b>146</b>

# RNAV (GPS) RWY 9

DAVID G JOYCE (ØR5)

RNP APCH - GPS.

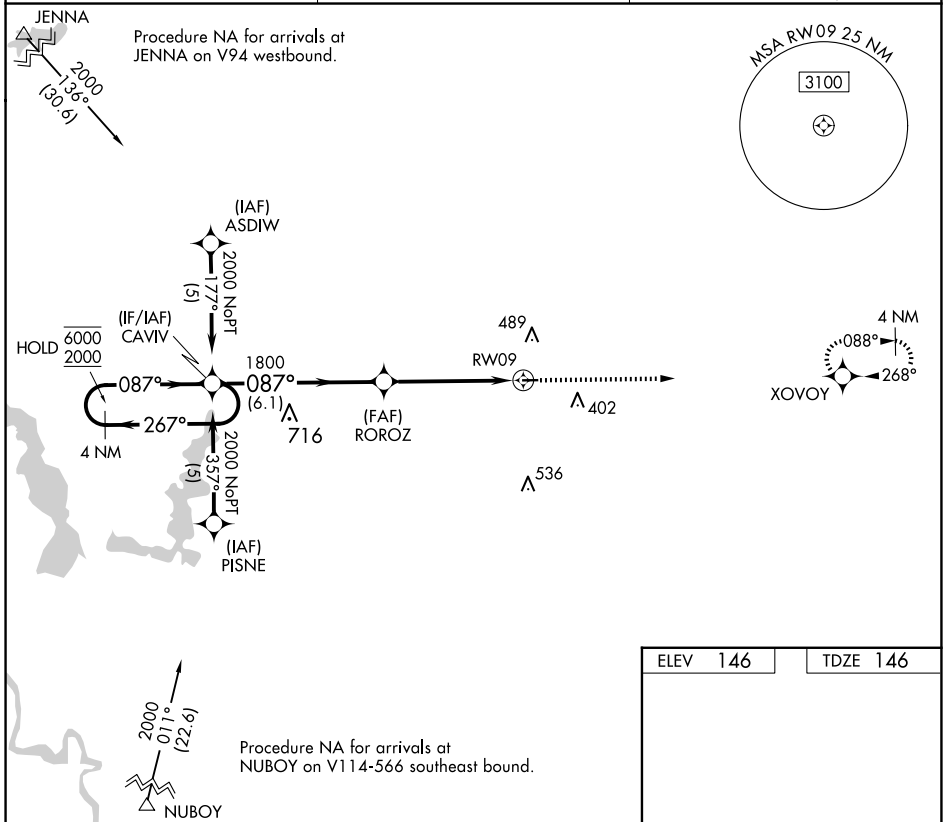
**⚠ NA** Procedure NA at night. Rwy 9 helicopter visibility reduction below 1 SM NA. Use Alexandria Intl altimeter setting, when not received use Esler Rgnl altimeter setting.

MISSED APPROACH: Climb to 2000 direct XVOVOY and hold.

AEX ASOS  
**123.975**

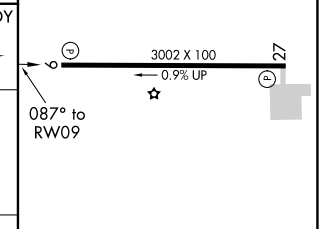
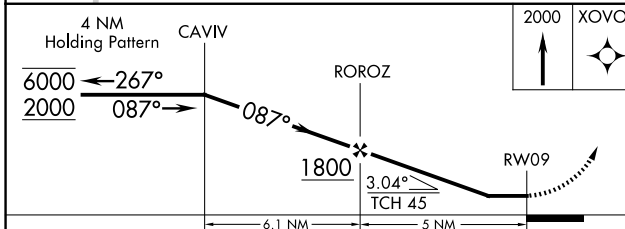
POLK APP CON  
**125.4 302.2**

UNICOM  
**122.7 (CTAF) 0**



SC-4, 17 APR 2025 to 15 MAY 2025

SC-4, 17 APR 2025 to 15 MAY 2025



CATEGORY	A	B	C	D
LNAV MDA	780-1	634 (700-1)		NA
CIRCLING	780-1 634 (700-1)	900-1 754 (800-1)		NA

MIRL Rwy 9-27 0  
REIL Rwy 9 and 27 0