

WAAS CH 42541 W27A	APP CRS 274°	Rwy ldg 4004 TDZE 699 Apt Elev 699
--	------------------------	---

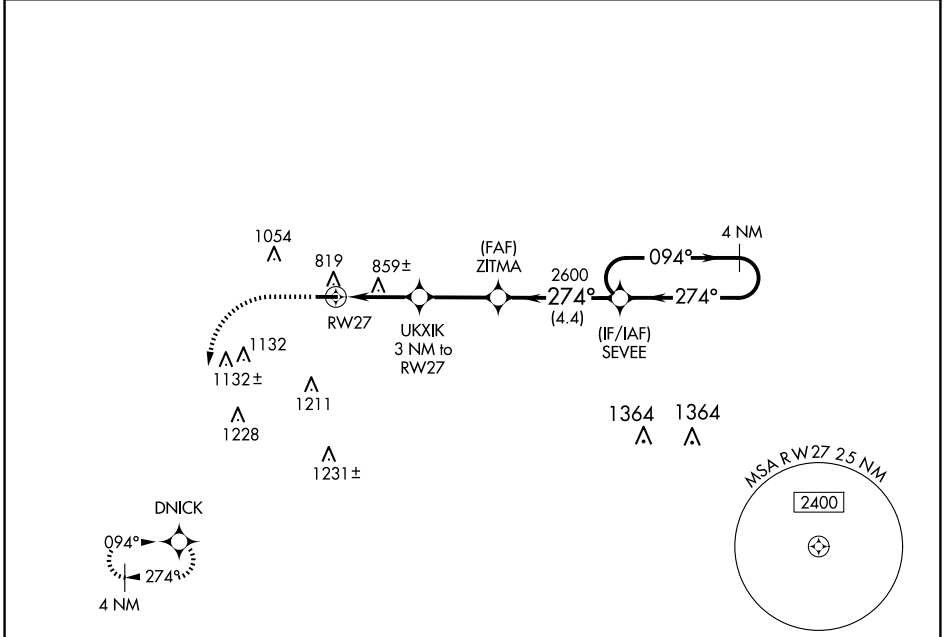
RNAV (GPS) RWY 27

KENTLAND MUNI (50I)

⚠ Circling to Rwy 09 NA at night. Circling NA north of Rwy 27-09. DME/DME RNP-0.3 NA. Baro-VNAV NA.
⚠ NA Use Jasper County altimeter setting.

MISSED APPROACH: Climb to 1200 then climbing left turn to 2600 direct DNICK and hold.

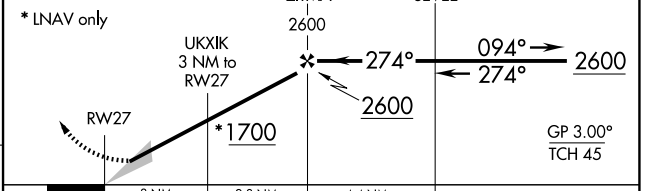
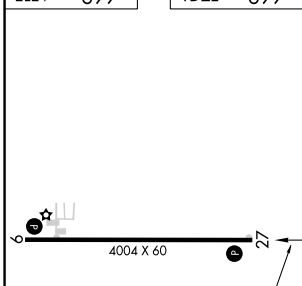
RZL AWOS-3P 119.175	CHICAGO CENTER 132.5 284.7	UNICOM 122.8 (CTAF) 0
-------------------------------	--------------------------------------	---------------------------------



EC-2, 17 APR 2025 to 15 MAY 2025

EC-2, 17 APR 2025 to 15 MAY 2025

ELEV 699	TDZE 699
-----------------	-----------------



CATEGORY	A	B	C	D
LPV DA	986-1 287 (300-1)			NA
LNAV/ VNAV DA	1006-1 307 (400-1)			NA
LNAV MDA	1160-1 461 (500-1)	1160-1 ³ / ₈ 461 (500-1 ³ / ₈)		NA
C CIRCLING	1160-1 461 (500-1)	1200-1 501 (600-1)	1200-1 ¹ / ₂ 501 (600-1 ¹ / ₂)	NA

HIRL Rwy 9-27 **0**
REL Rws 9 and 27 **0**