

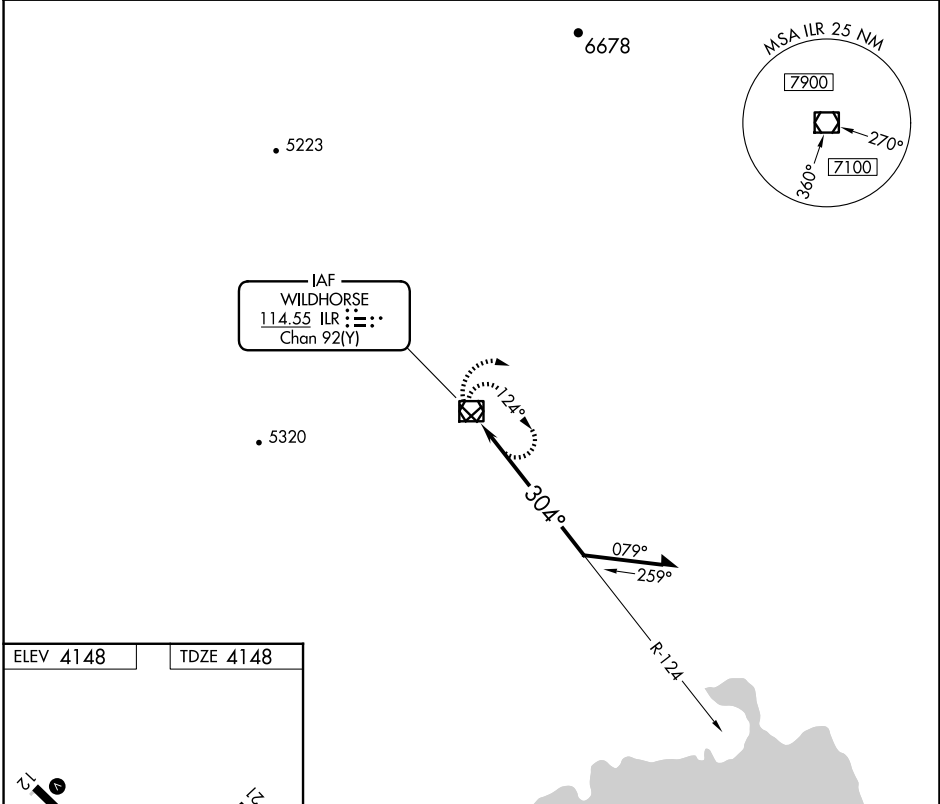
VOR/DME ILR 114.55 Chan 92 (Y)	APP CRS 304°	Rwy Idg TDZE Apt Elev 5101 4148 4148
--	------------------------	--

VOR RWY 30

BURNS MUNI (BNO)

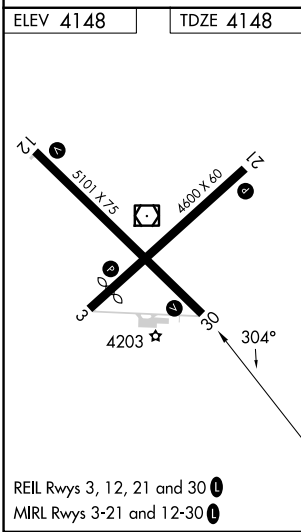
MISSED APPROACH: Climbing right turn to 8000 in ILR VOR/DME holding pattern.

ASOS 135.575	SALT LAKE CENTER 128.05 306.95	UNICOM 122.8 (CTAF) 0
------------------------	--	--



NW-1, 17 APR 2025 to 15 MAY 2025

NW-1, 17 APR 2025 to 15 MAY 2025



8000	ILR	ILR VOR/DME	Remain within 10 NM
		124°	7000
		ILR 4.5	304°
		0.4	4.1 NM

CATEGORY	A	B	C	D
S-30	5500-1¼ 1352 (1400-1¼)	5500-1½ 1352 (1400-1½)	5500-3	1352 (1400-3)
CIRCLING	5500-1¼ 1352 (1400-1¼)	5500-1½ 1352 (1400-1½)	5500-3	1352 (1400-3)