

APP CRS	Rwy Idg	3203
236°	TDZE	881
	Apt Elev	887

RNAV (GPS) RWY 24

ELTON HENSLEY MEML (F'TT)

RNP APCH.

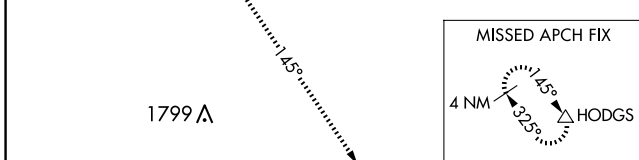
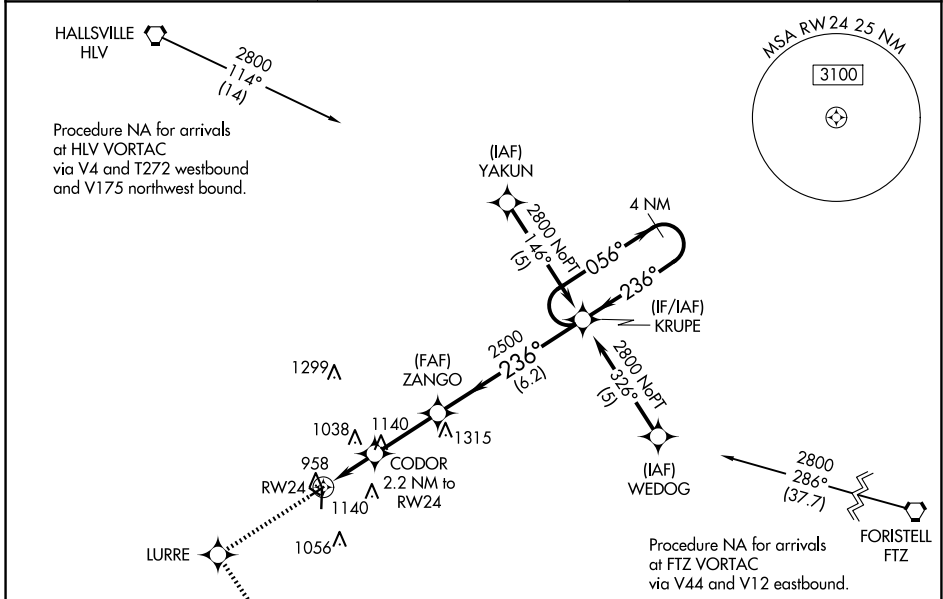
NA Use Columbia altimeter setting; when not received, use Jefferson City altimeter setting and increase all MDA 80 feet, and increase LNAV Cat C visibility ¼ mile. Rwy 24 helicopter visibility reduction below 1 SM NA. Circling NA to Rws 12 and 30. Straight-in Rwy 24 NA at night, Circling Rwy 18, 24 NA at night.

MISSED APPROACH: Climb to 2800 direct LURRE and left turn via 145° track to HODGS and hold.

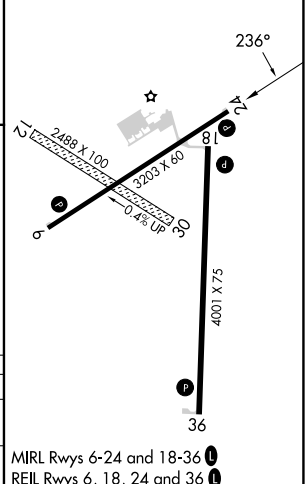
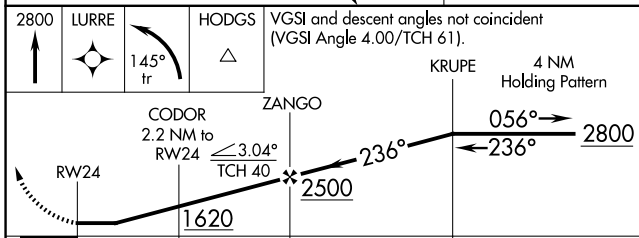
COU ASOS
128.45

MIZZU APP CON
124.375 353.925

UNICOM
122.7 (CTAF) 0



ELEV 887	TDZE 881
----------	----------



CATEGORY	A	B	C	D
LNAV MDA	1320-1	439 (500-1)	1320-1¼ 439 (500-1¼)	NA
C CIRCLING	1380-1 493 (500-1)	1480-1 593 (600-1)	1560-2 673 (700-2)	NA

MIRL Rws 6-24 and 18-36 0

REIL Rws 6, 18, 24 and 36 0

NC-3, 17 APR 2025 to 15 MAY 2025

NC-3, 17 APR 2025 to 15 MAY 2025