

APP CRS	Rwy Idg	4001
001°	TDZE	881
	Apt Elev	887

RNAV (GPS) RWY 36

ELTON HENSLEY MEML (F'TT)

RNP APCH-GPS

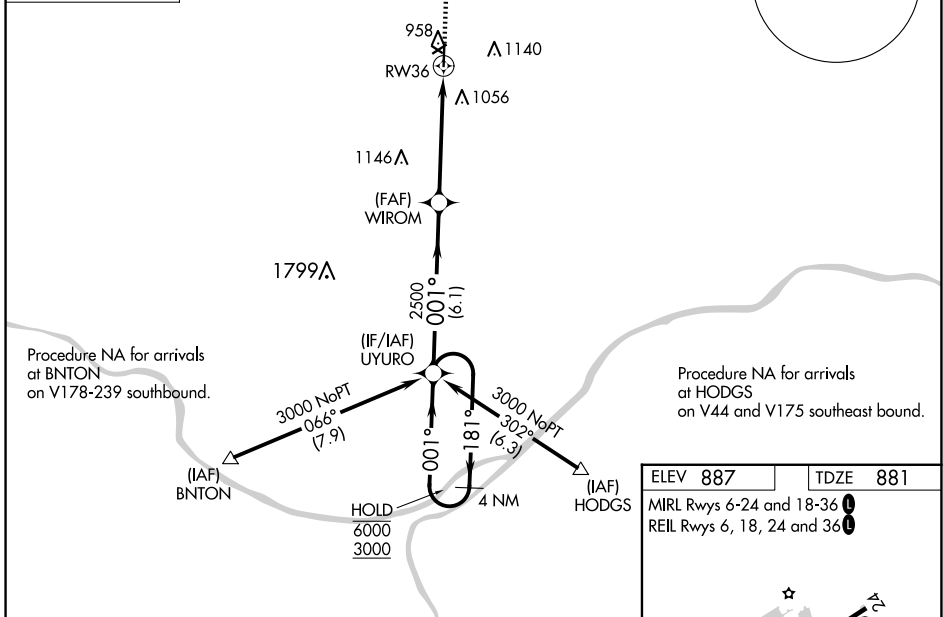
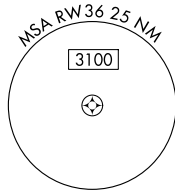
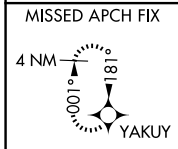
NA Circling NA to Rwys 12 and 30. Circling Rwy 18, 24 NA at night. Rwy 36 helicopter visibility reduction below 3/4 SM NA. Use Columbia altimeter setting; when not received use Jefferson City altimeter setting and increase all MDA 100 feet. Increase LNAV Cat C visibility 1/4 SM, and Circling Cat C visibility 1/4 SM.

MISSED APPROACH: Climb to 3000 direct YAKUY and hold.

COU ASOS
128.45

MIZZU APP CON
124.375 353.925

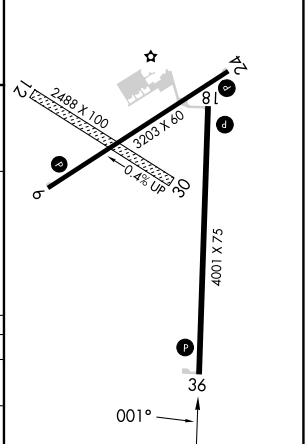
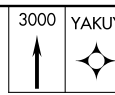
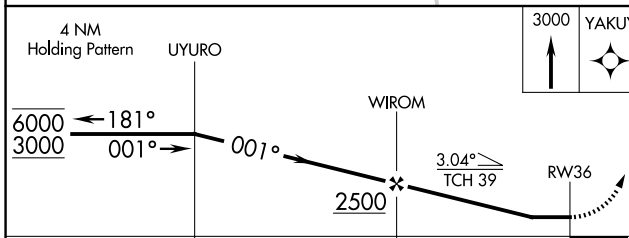
UNICOM
122.7 (CTAF)



Procedure NA for arrivals at BNTON on V178-239 southbound.

Procedure NA for arrivals at HODGS on V44 and V175 southeast bound.

ELEV 887	TDZE 881
MIRL Rwys 6-24 and 18-36	
REIL Rwys 6, 18, 24 and 36	



CATEGORY	A	B	C	D
LNAV MDA	1280-1	399 (400-1)	1280-1 1/8 399 (400-1 1/8)	NA
C CIRCLING	1380-1 493 (500-1)	1480-1 593 (600-1)	1560-2 673 (700-2)	NA

NC-3, 17 APR 2025 to 15 MAY 2025

NC-3, 17 APR 2025 to 15 MAY 2025