

WAAS CH 90336 W33A	APP CRS 332°	Rwy Idg TDZE Apt Elev	4000 190 198
--	------------------------	-----------------------------	---

RNAV (GPS) RWY 33

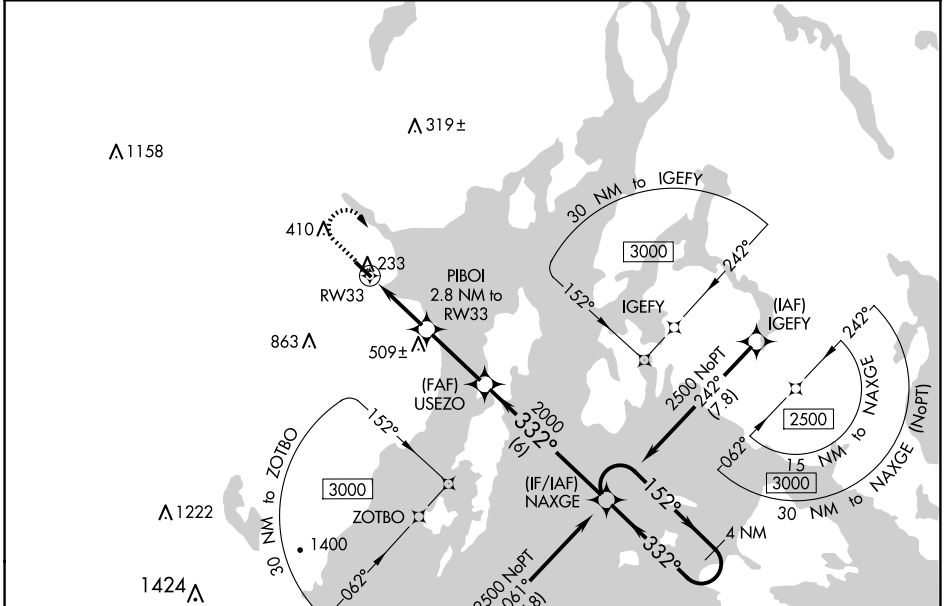
BELFAST MUNI (BST)

RNP APCH.

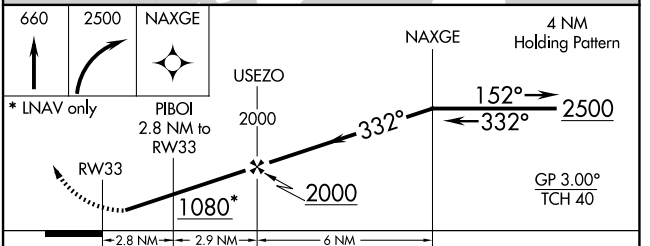
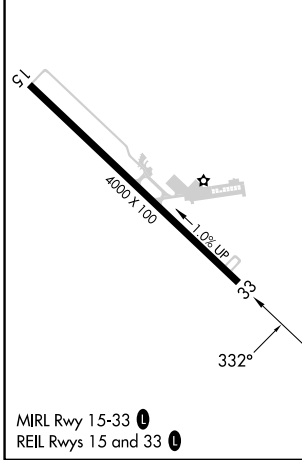
⚠ Baro-VNAV NA when using Bangor Intl altimeter setting. For uncompensated Baro-VNAV systems, LNAV/VNAV NA below -20°C (-4°F) or above 54°C (130°F). Rwy 33 helicopter visibility reduction below ¼ SM NA. When local altimeter setting not received, use Bangor Intl altimeter setting and increase all DA/MDA 60 feet; increase LPV Cats A/B, LNAV/VNAV all Cats and Circling Cat C visibility ½ SM.

⚠ MISSED APPROACH: Climb to 660 then climbing right turn to 2500 direct NAXGE and hold.

AWOS-AV 122.975	BANGOR APP CON 118.925 239.3	UNICOM 122.975 (CTAF) 0
---------------------------	--	-----------------------------------



ELEV 198	TDZE 190
----------	----------



CATEGORY	A	B	C	D
LPV DA	440-1	250 (300-1)		NA
LNAV/VNAV DA	512-1¼	322 (400-1¼)		NA
LNAV MDA	580-1	390 (400-1)	580-1½ 390 (400-1½)	NA
C CIRCLING	700-1 502 (600-1)	800-1 602 (700-1)	1040-2½ 842 (900-2½)	NA

NE-1, 17 APR 2025 to 15 MAY 2025

NE-1, 17 APR 2025 to 15 MAY 2025