

WAAS CH <b>49023</b> <b>W06A</b>	APP CRS <b>066°</b>	Rwy Idg TDZE <b>127</b> Apt Elev <b>127</b>	<b>5400</b>
--	------------------------	---	-------------

# RNAV (GPS) RWY 6

LAKE WALES MUNI (X07)

RNP APCH - GPS.

**▽** Circling Rwy 17 NA at night.  
**▲** Rwy 6 helicopter visibility reduction below 3/4 SM NA.

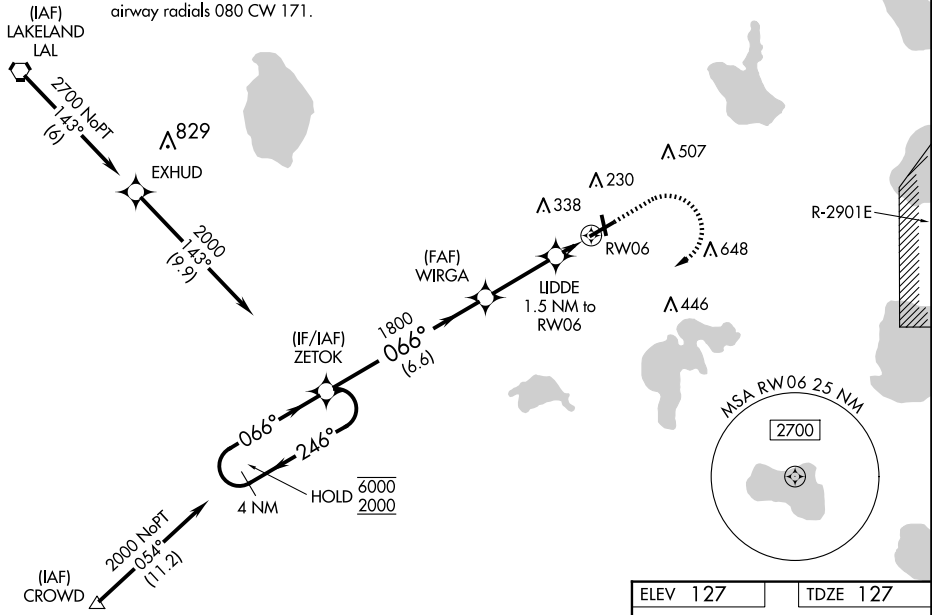
MISSED APPROACH: Climb to 1000 then climbing right turn to 2000 direct ZETOK and hold.

AWOS-3  
**124.225**

MIAMI CENTER  
**134.55 257.7**

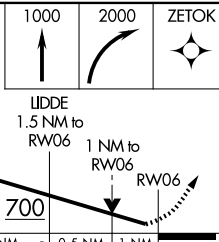
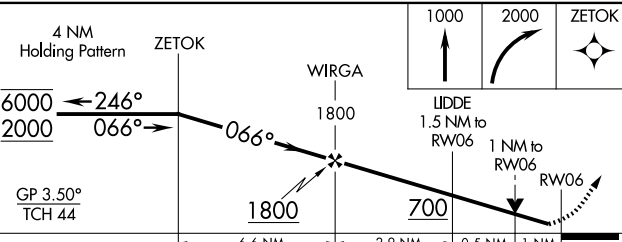
UNICOM  
**122.8 (CTAF) 0**

Procedure NA for arrival on LAL VORTAC  
airway radials 080 CW 171.



Procedure NA for arrivals at CROWD  
on V509 northwest bound.

4 NM  
Holding Pattern



CATEGORY	A	B	C	D
LPV DA	377-3/4	250 (300-3/4)	397-7/8	270 (300-7/8)
LNAV MDA	520-1	393 (400-1)	520-1 1/8	393 (400-1 1/8)
<b>C</b> CIRCLING	560-1 433 (500-1)	700-1 573 (600-1)	700-1 1/2 573 (600-1 1/2)	960-2 3/4 833 (900-2 3/4)

ELEV 127	TDZE 127
----------	----------

Diagram showing the runway layout for RWY 6, including dimensions (5400 x 100) and other details. The diagram also shows the location of RWY 24 and RWY 6-24.

REIL Rwy 6 and 24 0  
MIRL Rwy 6-24 0

SE-3, 17 APR 2025 to 15 MAY 2025

SE-3, 17 APR 2025 to 15 MAY 2025