

FORT CARSON, COLORADO

# RNAV (GPS) RWY 31

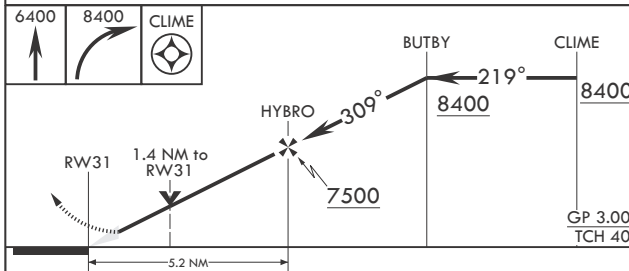
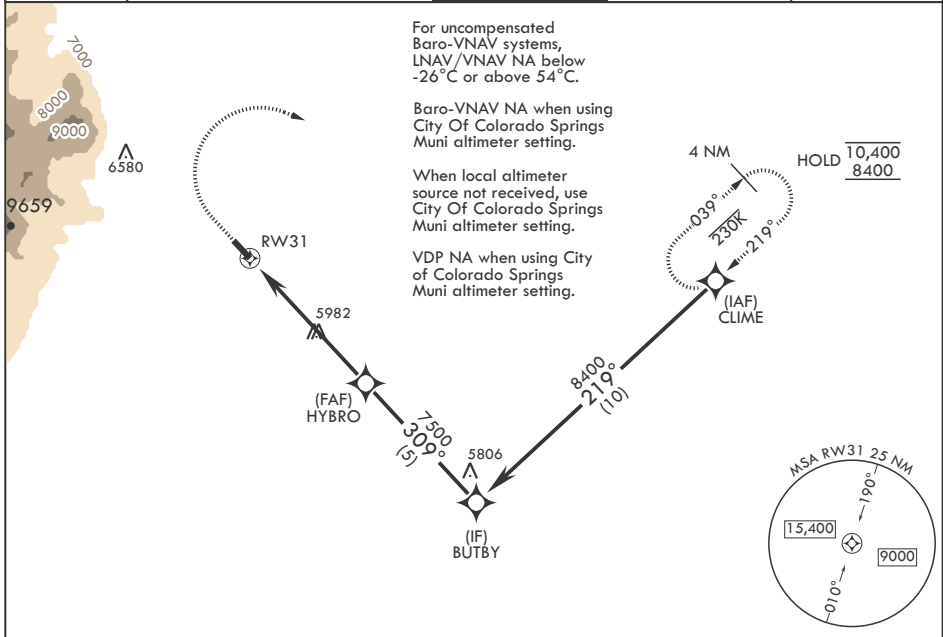
WAAS CH 43949 W31A	APCH CRS 309°	Rwy ldg TDZE Arprt Elev	4500 5826 5841
--------------------------	------------------	-------------------------------	----------------------

-(USA)

BUTTS AHP (FORT CARSON) (KFCS)

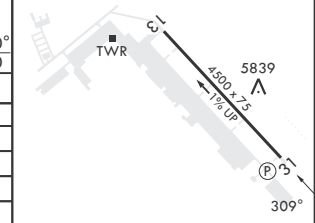
RNP APCH - GPS	MISSED APPROACH: Climb to 6400 then climbing right turn to 8400 direct CLIME and hold.
* Circling NA SW of RWY 13-31.	

ATIS 108.8	SPRINGS APP CON/DEP CON 124.0 257.875	TOWER 125.5 229.4	GND CON 118.55 253.6	CLNC DEL 239.3
---------------	--	----------------------	-------------------------	-------------------



ELEV 5841	TDZE 5826
-----------	-----------

CATEGORY	A	B	C	D
LPV DA	6026-3/4	200	(200-3/4)	
LNAV/VNAV DA	6130-7/8	304	(300-7/8)	
LNAV MDA	6280-1	454 (500-1)	6280-1 1/8	454 (500-1 1/8)
<b>C</b> CIRCLING*	6280-1 406 (500-1)	6400-1 526 (600-1)	6580-2 706 (800-2)	6880-3 1006 (1100-3)
CITY OF COLORADO SPRINGS MUNI ALTIMETER SETTING MINIMUMS				
LPV DA	6089-7/8	263	(300-7/8)	
LNAV/VNAV DA	6193-1	367	(400-1)	
LNAV MDA	6360-1	534 (500-1)	6360-1 1/2	534 (500-1 1/2)
<b>C</b> CIRCLING*	6360-1 486 (500-1)	6480-1 606 (700-1)	6660-2 1/4 786 (800-2 1/4)	6960-3 1086 (1100-3)



FORT CARSON, COLORADO 38°42'N - 104°45'W BUTTS AHP (FORT CARSON) (KFCS)

Orig 23FEB23

# RNAV (GPS) RWY 31

SW-1, 17 APR 2025 to 15 MAY 2025

SW-1, 17 APR 2025 to 15 MAY 2025