

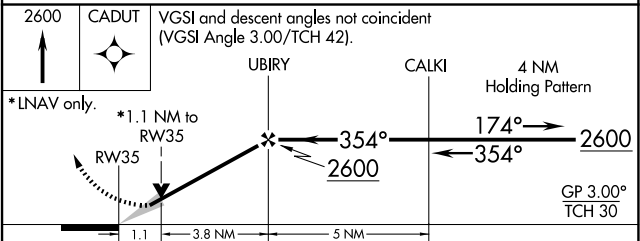
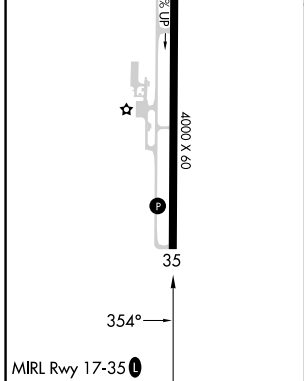
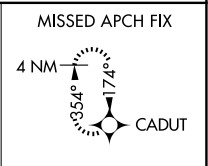
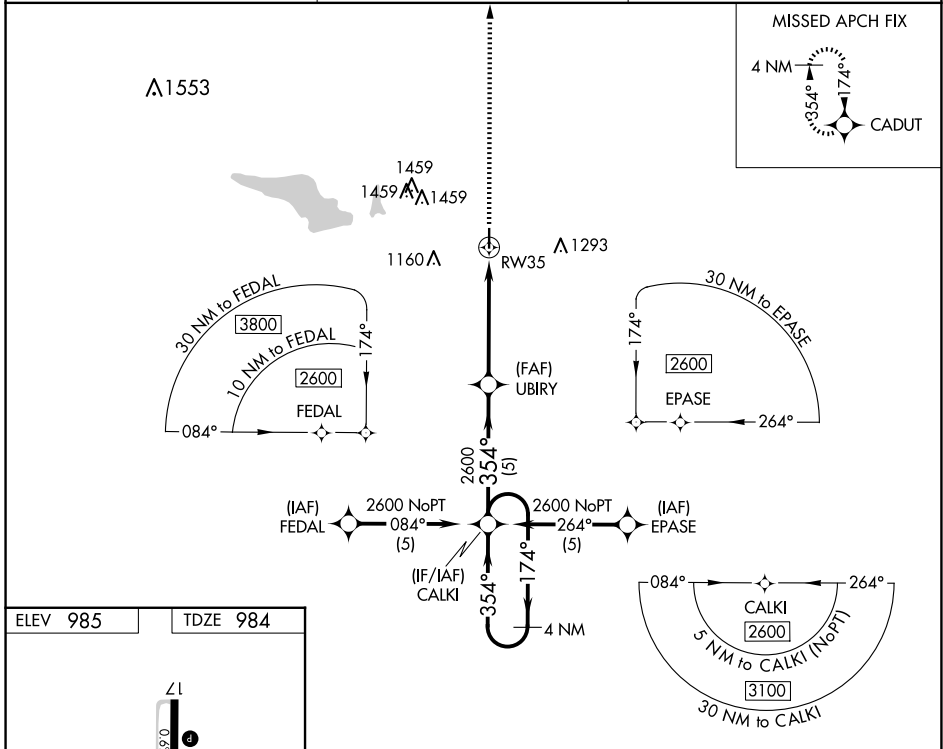
APP CRS <b>354°</b>	Rwy Idg TDZE Apt Elev	<b>4000</b> <b>984</b> <b>985</b>
------------------------	-----------------------------	---

# RNAV (GPS) RWY 35

CHANDLER RGNL (CQB)

RNP APCH.	MISSED APPROACH: Climb to 2600 direct CADUT and hold.
<p><b>▽</b> When local altimeter setting not received, use Shawnee altimeter setting and increase all MDA 80 feet; increase LNAV Cat C visibility 1/8 SM. VDP NA with Shawnee Rgnl altimeter setting.</p> <p><b>▲</b> NA</p>	

AWOS-3PT <b>119.275</b>	KANSAS CITY CENTER <b>127.8 319.1</b>	CTAF <b>122.9</b>
----------------------------	--	----------------------



CATEGORY	A	B	C	D
GLS PA DA	NA			
LNAV/VNAV DA	NA			
LNAV MDA	1320-1	335 (400-1)	NA	

SC-1, 17 APR 2025 to 15 MAY 2025

SC-1, 17 APR 2025 to 15 MAY 2025