

WAAS CH 93736 W26A	APP CRS 260°	Rwy Idg TDZE 1476 Apt Elev 1476	2922
--	------------------------	---	-------------

RNAV (GPS) RWY 26

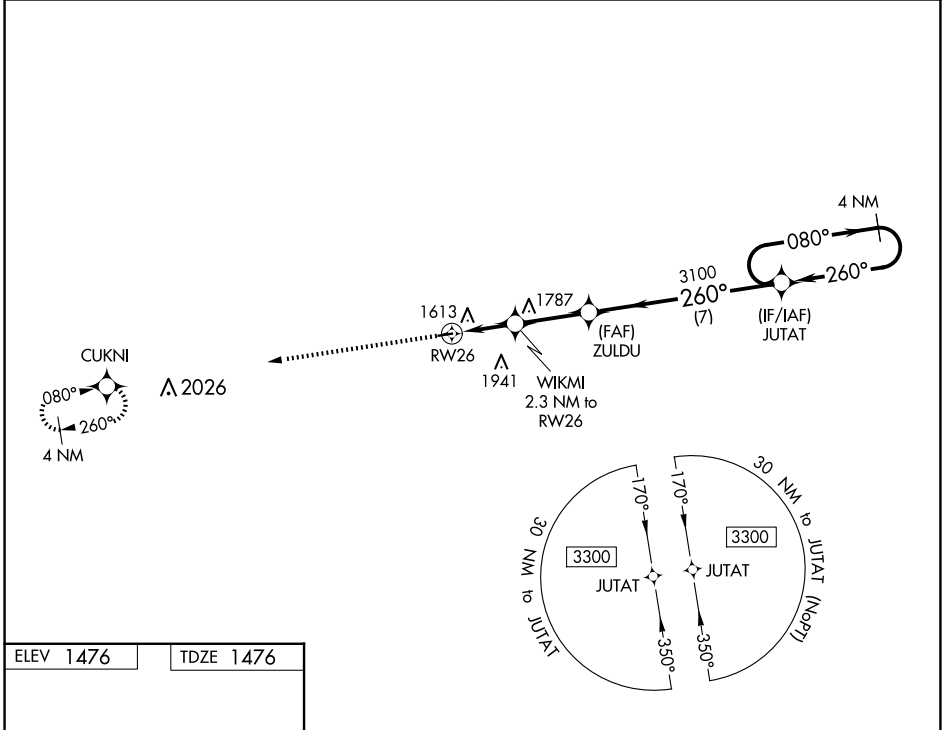
MOUNTAIN GROVE MEML (1M0)

⚠ DME/DME RNP-0.3 NA. Procedure NA at night. Use Fort Leonard Wood altimeter setting, when not received use Springfield altimeter setting and increase all MDA 20 feet. Helicopter visibility reduction below 1 SM NA.

MISSED APPROACH: Climb to 3300 direct CUKNI and hold.

KANSAS CITY CENTER
128.35 284.675

CTAF
122.9



NC-3, 17 APR 2025 to 15 MAY 2025

NC-3, 17 APR 2025 to 15 MAY 2025

ELEV 1476	TDZE 1476
------------------	------------------

3300		CUKNI		Visual Segment - Obstacles.	
↑		✧		JUTAT 4 NM Holding Pattern	
RW26		WIKMI 2.3 NM to RW26		ZULDU	
2240		3100		3300	
← 2.3 NM		← 2.7 NM		← 7 NM	
CATEGORY	A	B	C	D	
LP MDA	2120-1	644 (700-1)			NA
LNAV MDA	2160-1	684 (700-1)			NA
C CIRCLING	2160-1 684 (700-1)	2240-1 764 (800-1)			NA

