

APP CRS CH <b>45643</b> <b>W17A</b>	APP CRS <b>176°</b>	Rwy Idg <b>5600</b> TDZE <b>1420</b> Apt Elev <b>1420</b>
---	------------------------	---

# RNAV (GPS) RWY 17

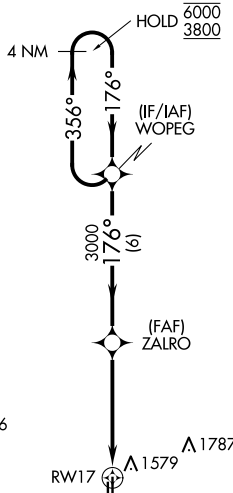
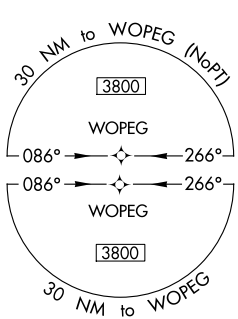
EL RENO RGNL (RQO)

RNP APCH-GPS.

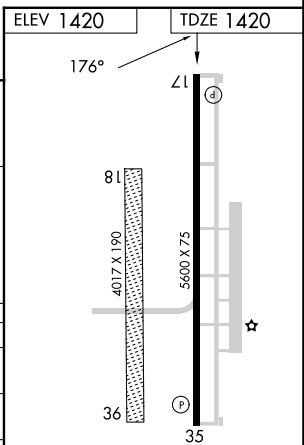
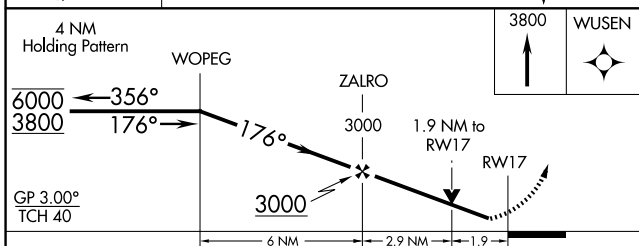
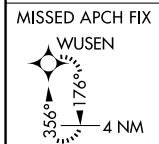
**⚠** Circling NA to Rwy 18 and 36. Circling Rwy 35 NA at night.  
**⚠** Rwy 17 helicopter visibility reduction below 3/4 SM NA. For uncompensated Baro-VNAV systems, LNAV/VNAV NA below -17°C or above 54°C.

MISSED APPROACH: Climb to 3800 direct WUSEN and hold.

AWOS-3 <b>118.475</b>	OKE CITY APP CON <b>124.6 266.8</b>	UNICOM <b>122.8 (CTAF) 0</b>
--------------------------	--	---------------------------------



△2283



CATEGORY	A	B	C	D
LPV DA	1670-3/4 250 (300-3/4)			
LNAV/VNAV DA	1754-1 334 (400-1)			
LNAV MDA	1860-1 440 (500-1)	1860-1 1/4 440 (500-1 1/4)		
<b>C</b> CIRCLING	1900-1 480 (500-1)	2140-2 720 (800-2)	2140-2 1/4 720 (800-2 1/4)	

MIRL Rwy 17-35 0  
REIL Rwy 17 and 35 0

SC-1, 17 APR 2025 to 15 MAY 2025

SC-1, 17 APR 2025 to 15 MAY 2025