

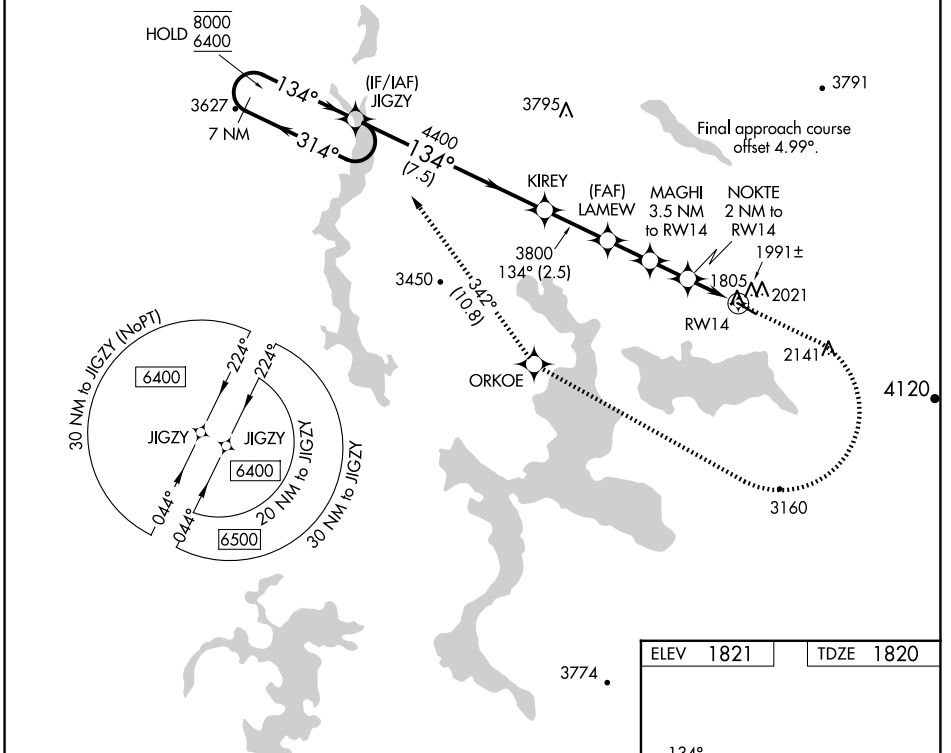
WAAS CH 40046 W14A	APP CRS 134°	Rwy Idg TDZE Apt Elev	4299 1820 1821
--	------------------------	-----------------------------	---

RNAV (GPS) RWY 14

STEPHEN A BEAN MUNI (8B)(f)

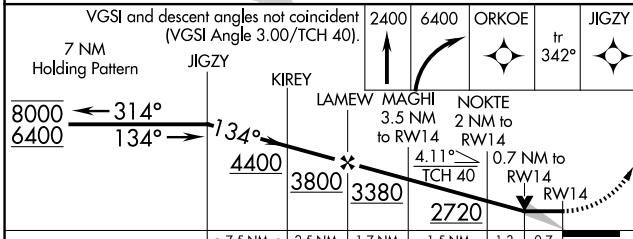
RNP APCH - GPS.	MISSED APPROACH: Climb to 2400 then climbing right turn to 6400 direct ORKOE and track 342° to JIGZY and hold, continue climb-in-hold to 6400.
<p>Circling Rwy 32 NA at night. -30°C</p>	

AWOS-3PT 118.0	BOSTON CENTER 124.25 290.5	UNICOM 122.8 (CTAF) 0
--------------------------	--------------------------------------	---------------------------------



NE-1, 17 APR 2025 to 15 MAY 2025

NE-1, 17 APR 2025 to 15 MAY 2025



ELEV 1821	TDZE 1820
-----------	-----------

2400	6400	ORKOE	tr 342°	JIGZY
↑	↻	✦		✦

3800 3380 2720

4.11° TCH 40

0.7 NM to RWY 14

0.7 NM to RWY 14

7 NM Holding Pattern

JIGZY

KIREY

LAMEW

MAGHI 3.5 NM to RWY 14

NOKTE 2 NM to RWY 14

REIL Rws 14 and 32 (f)

MIRL Rwy 14-32 (f)

CATEGORY	A	B	C	D
LP MDA	2080-1	260 (300-1)		NA
LNAV MDA	2260-1	440 (500-1)		NA
CIRCLING	2360-1	539 (600-1)		NA