

APP CRS	Rwy Idg	2160
181°	TDZE	708
	Apt Elev	708

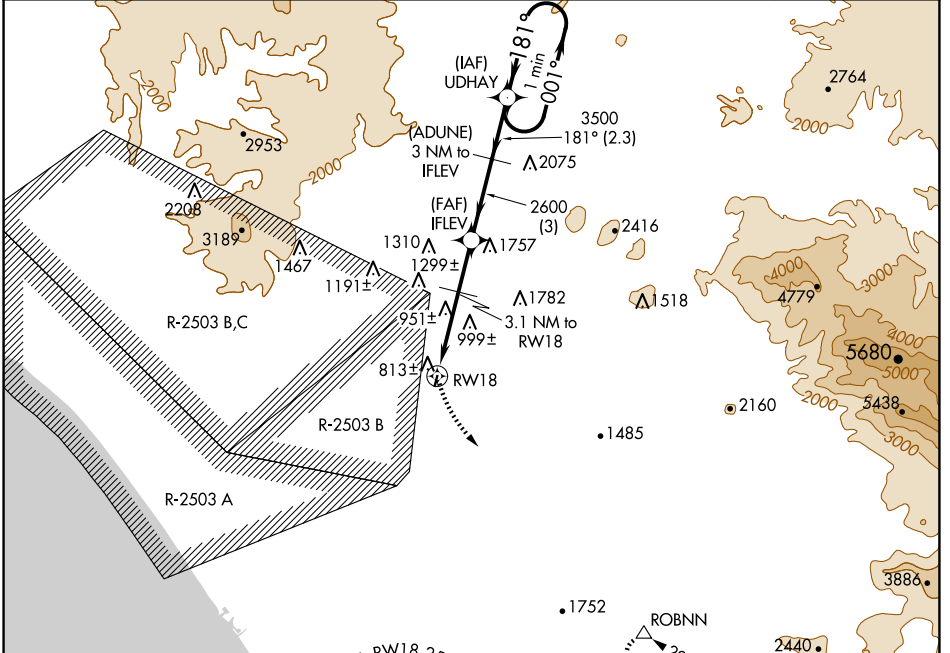
GPS RWY 18

FALLBROOK COMMUNITY AIRPARK (L18)

⚠ Circling NA west of Rwy 18-36. When local altimeter setting not received, use Miramar MCAS (Joe Foss Fld) altimeter setting and increase all MDAs 120 feet.

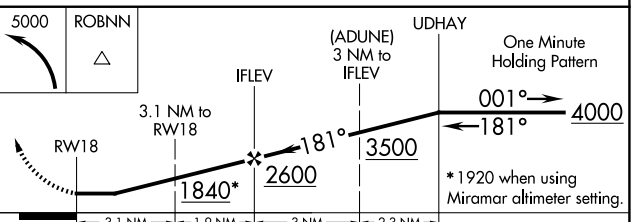
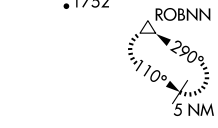
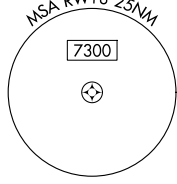
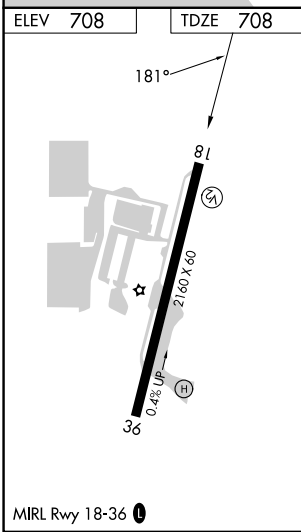
⚠ MISSED APPROACH: Climbing left turn to 5000 direct ROBNN WP and hold.

AWOS-3P 118.425	SOCAL APP CON 127.3 323.0	CTAF 123.05 0
---------------------------	-------------------------------------	-------------------------



SW-3, 17 APR 2025 to 15 MAY 2025

SW-3, 17 APR 2025 to 15 MAY 2025



CATEGORY	A	B	C	D
S-18	1260-1	552 (600-1)		NA
CIRCLING	1260-1 552 (600-1)	1380-1 672 (700-1)		NA

GPS RWY 18