

LOC/DME I-TDF <b>108.7</b> Chan 24	APP CRS <b>060°</b>	Rwy Idg TDZE Apt Elev	<b>5702</b> <b>604</b> <b>609</b>
--	------------------------	-----------------------------	---

# ILS or LOC RWY 6

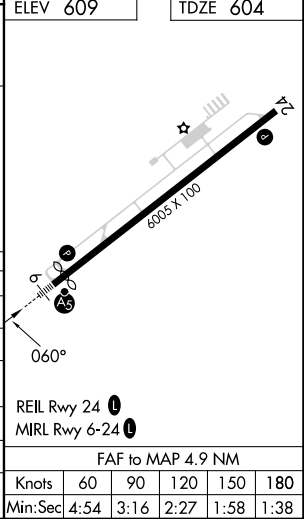
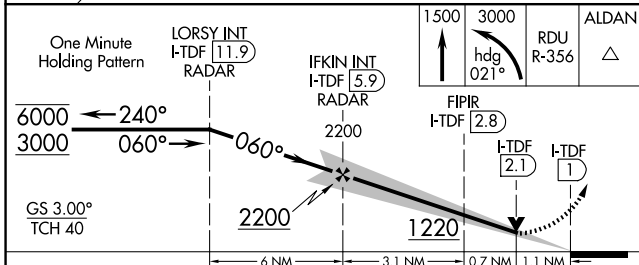
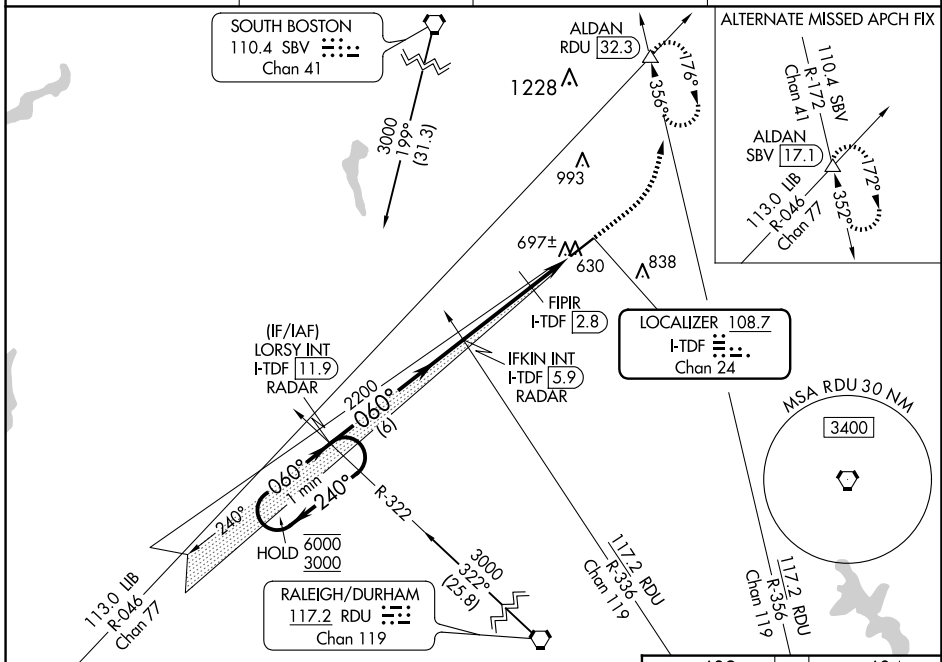
RALEIGH RGNL AT PERSON COUNTY (TDF)

**▼** For inop ALS, increase S-LOC 6 visibility Cats C/D to 1½ SM and increase FIPR fix minimums  
**▲ NA** S-LOC 6 visibility Cats C/D to 1 SM.

**MALSR**

**MISSED APPROACH:** Climb to 1500 then climbing left turn to 3000 on heading 021° and on RDU VORTAC R-356 to ALDAN INT/RDU 32.3 DME and hold, continue climb-in-hold to 3000.

AWOS-3 <b>126.725</b>	RALEIGH APP CON <b>132.35 256.9</b>	GCO <b>119.7</b>	UNICOM <b>122.7 (CTAF) 0</b>
--------------------------	--	---------------------	---------------------------------



CATEGORY	A	B	C	D
S-ILS 6	804-½ 200 (200-½)			
S-LOC 6	1220-½	616 (700-½)	1220-1⅜	616 (700-1⅜)
CIRCLING	1220-1	611 (700-1)	1300-2 691 (700-2)	1300-2¼ 691 (700-2¼)
<b>FIPR FIX MINIMUMS</b>				
S-LOC 6	980-½	376 (400-½)	980-⅝	376 (400-⅝)
CIRCLING	1080-1	471 (500-1)	1300-2 691 (700-2)	1300-2¼ 691 (700-2¼)

SE-2, 17 APR 2025 to 15 MAY 2025

SE-2, 17 APR 2025 to 15 MAY 2025