

RNAV (GPS)-A

HEBER VALLEY (HCR)

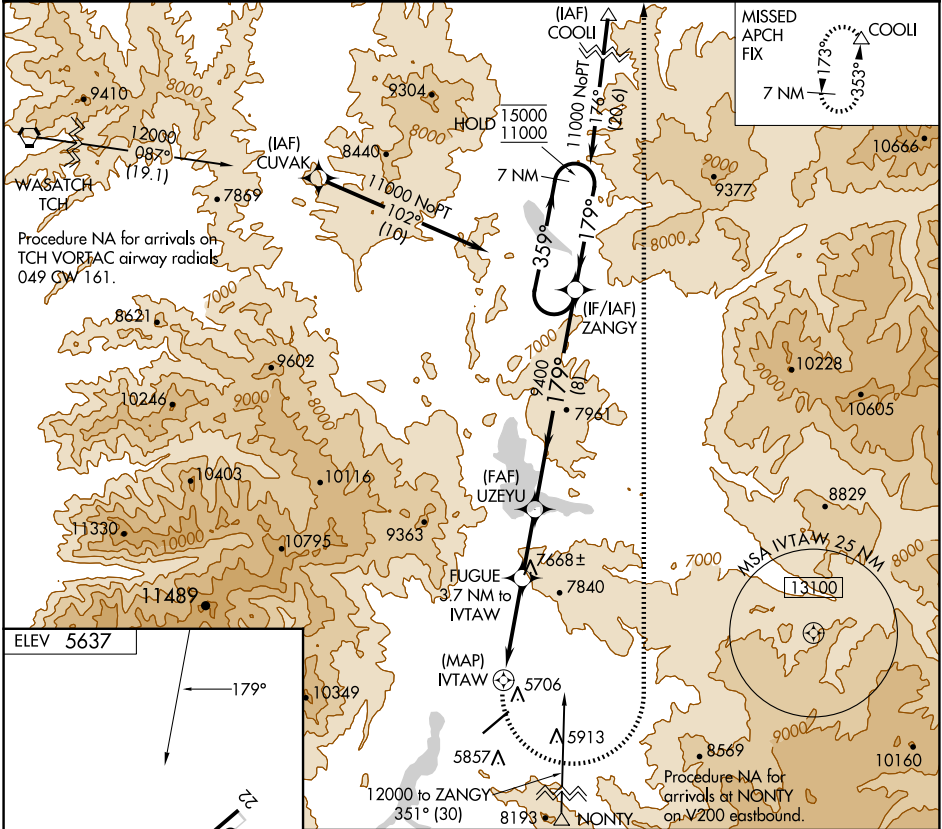
APP CRS 179°	Rwy Idg TDZE Apt Elev	N/A N/A 5637
------------------------	-----------------------------	---

RNP APCH.

▼ Circling NA south of Rwy 4-22.
▲ Circling Rwy 4 NA at night.
⊖ -17°C

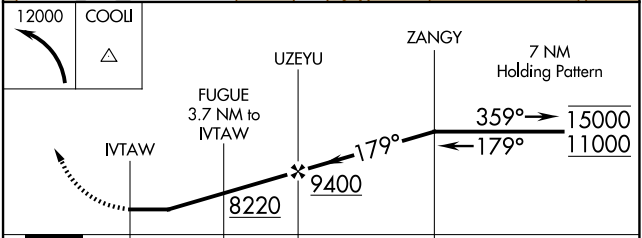
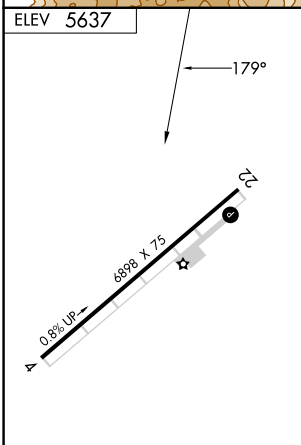
MISSED APPROACH: (Do not exceed 210K until turn completion)
Climbing left turn to 12000 direct COOL and hold.

AWOS-3PT 124.825	SALT LAKE CITY CENTER 119.95 377.15	UNICOM 122.8 (CTAF)
----------------------------	---	-------------------------------



Procedure NA for arrivals on TCH VORTAC airway radiotelephone 049 CW 161.

Procedure NA for arrivals at NONTY on V200 eastbound.



MIRL Rwy 4-22 Ⓢ				
CATEGORY	A	B	C	D
Ⓢ CIRCLING	8020-1½	2383 (2400-1½)	8020-3 2383 (2400-3)	NA

SW-4, 17 APR 2025 to 15 MAY 2025

SW-4, 17 APR 2025 to 15 MAY 2025