

| | | |
|--|------------------------|---|
| WAAS CH 72714 W24A | APP CRS 238° | Rwy ldg 4500 TDZE 928 Apt Elev 933 |
|--|------------------------|---|

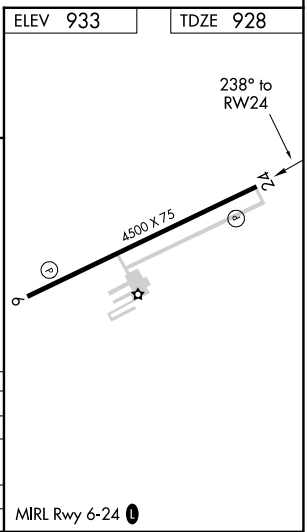
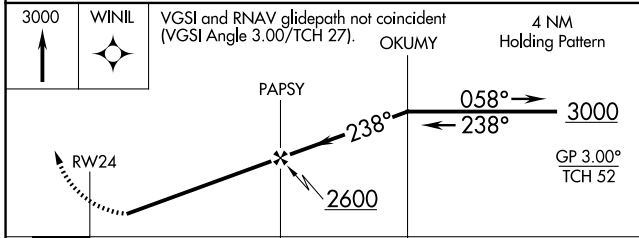
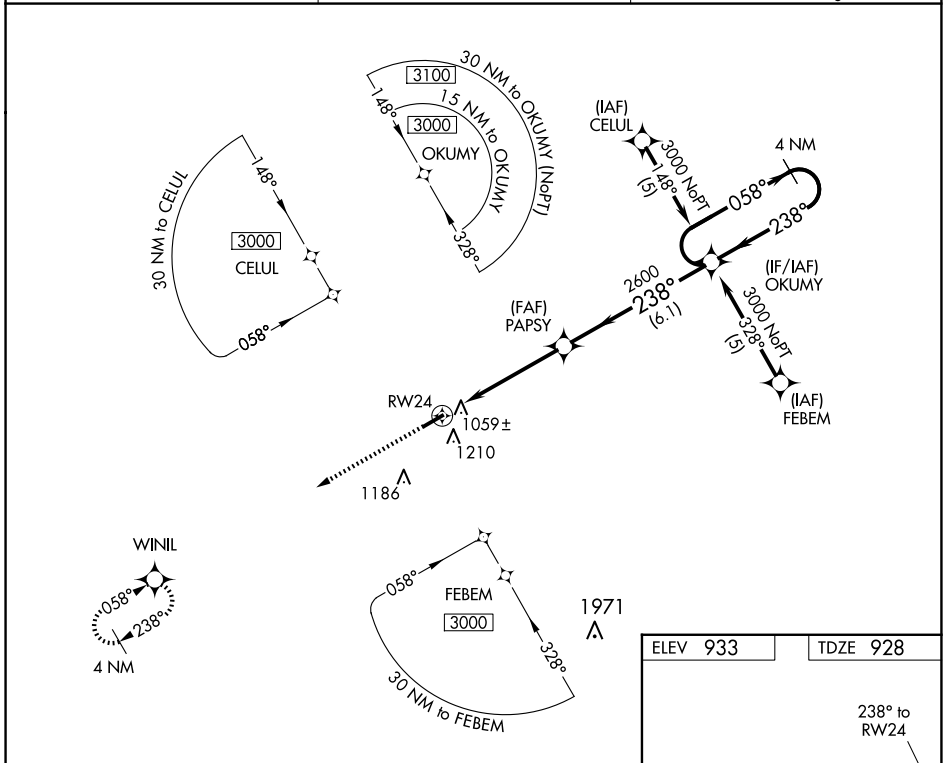
RNAV (GPS) RWY 24

SULLIVAN RGNL (UUU)

▼ Straight-in minimums NA at night. Circling to Rwy 24 NA at night. Baro-VNAV NA when using Rolla Nil altimeter setting. For uncompensated Baro-VNAV systems, LNAV/VNAV NA below -16°C (4°F) or above 54°C (130°F). DME/DME RNP-0.3 NA. Visibility reduction by helicopters NA. ▲ NA When local altimeter setting not received, use Rolla Nil altimeter setting and increase all DA 98 feet and all MDA 100 feet, increase LPV and LNAV/VNAV Cat A and B visibility ¼ mile.

MISSED APPROACH: Climb to 3000 direct WINIL and hold.

| | | |
|----------------------------|---|---------------------------------|
| AWOS-3PT 119.375 | KANSAS CITY CENTER 128.35 284.675 | UNICOM 122.7 (CTAF) 0 |
|----------------------------|---|---------------------------------|



| CATEGORY | A | B | C | D |
|--------------|---------|--------------|---|----|
| LPV DA | 1178-1 | 250 (300-1) | | NA |
| LNAV/VNAV DA | 1392-1¾ | 464 (500-1¾) | | NA |
| LNAV MDA | 1460-1 | 532 (600-1) | | NA |
| CIRCLING | 1520-1 | 587 (600-1) | | NA |

NC-3, 17 APR 2025 to 15 MAY 2025

NC-3, 17 APR 2025 to 15 MAY 2025