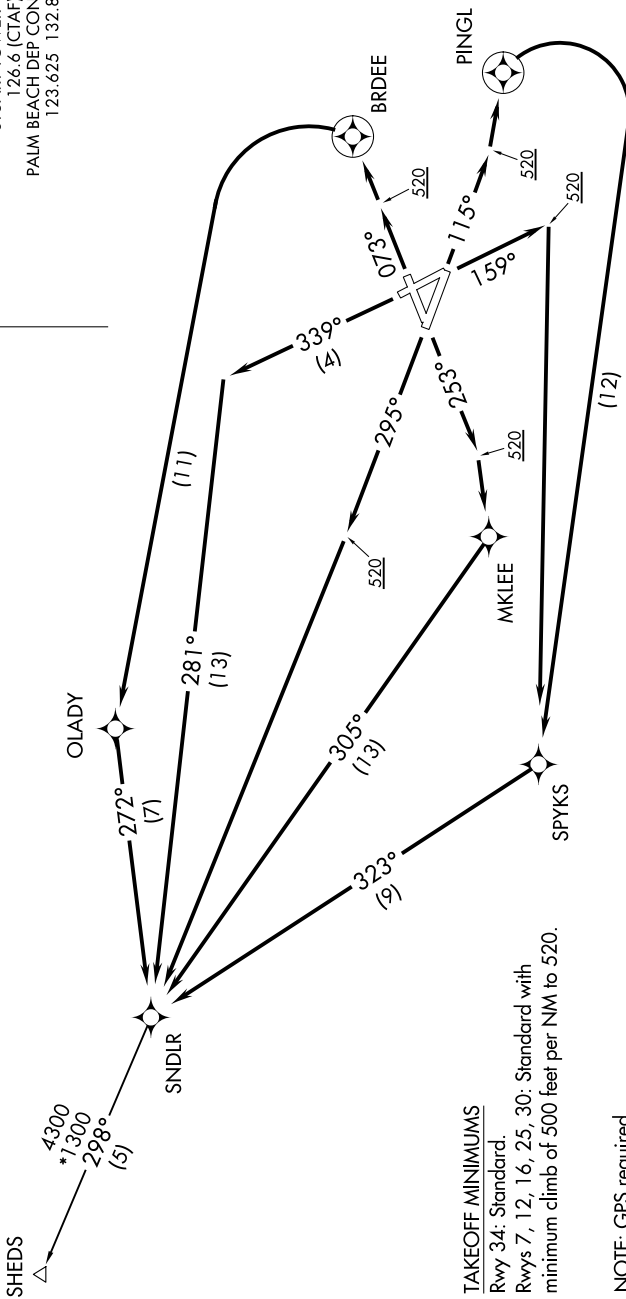


# SNDLR TWO DEPARTURE (RNAV)

ATIS  
134.475  
GND CON  
121.7  
STUART TOWER\*  
126.6 (CTAF)  
PALM BEACH DEP CON  
123.625 132.8



**TOP ALTITUDE:  
3000**



TAKEOFF MINIMUMS

Rwy 34: Standard.  
Rwys 7, 12, 16, 25, 30: Standard with  
minimum climb of 500 feet per NM to 520.

- NOTE: GPS required.
- NOTE: RADAR required.
- NOTE: RNAV 1.
- NOTE: For turbojet/turboprop aircraft only.
- NOTE: Transponder code will be issued via SUA ground control or PBI APP CON when tower closed.

(NARRATIVE CONTINUED ON FOLLOWING PAGE)

NOTE: Chart not to scale.