

|  |                        |                             |   |
|--|------------------------|-----------------------------|---|
| WAAS<br>CH <b>53524</b><br><b>W25A</b> | APP CRS<br><b>252°</b> | Rwy Idg<br>TDZE<br>Apt Elev | <b>4299</b><br><b>2653</b><br><b>2653</b> |
|--|------------------------|-----------------------------|---|

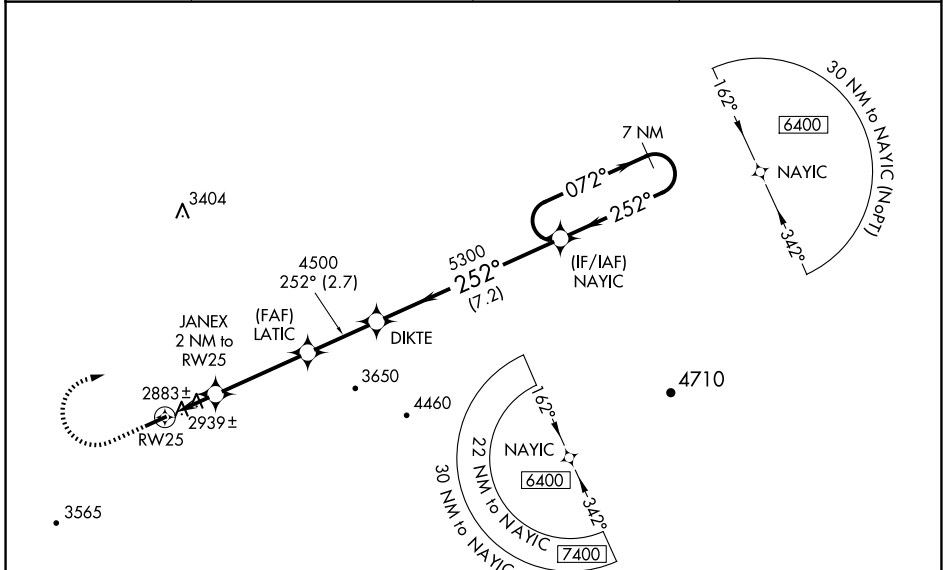
# RNAV (GPS) RWY 25

TAZEWELL COUNTY (JF'Z)

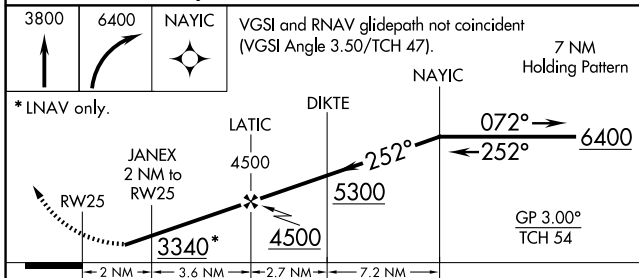
Baro-VNAV NA when using Wise altimeter setting. For uncompensated Baro-VNAV systems, LNAV/VNAV NA below -20°C (-4°F) or above 54°C (130°F). DME/DME RNP-0.3 NA. Visibility reduction by helicopters NA. When local altimeter setting not received, use Wise altimeter setting and increase all DA 86 feet and all MDA 100 feet, increase LPV and LNAV/VNAV all Cats and Circling Cat C visibility 3/8 mile, increase LNAV Cat C visibility 1/4 mile. When VGSI inop, Straight-in/Circling Rwy 25 procedure NA at night. When VGSI inop, Circling Rwy 7 NA at night. Circling NA for Cat C south of Rwy 7-25.

**MISSED APPROACH:**  
Climb to 3800 then climbing right turn to 6400 direct NAYIC and hold, continue climb-in-hold to 6400.

|                          |                                       |                       |                                  |
|--------------------------|---------------------------------------|-----------------------|----------------------------------|
| AWOS-3<br><b>118.075</b> | ATLANTA CENTER<br><b>127.85 269.3</b> | GCO<br><b>135.075</b> | UNICOM<br><b>123.05 (CTAF) 1</b> |
|--------------------------|---------------------------------------|-----------------------|----------------------------------|

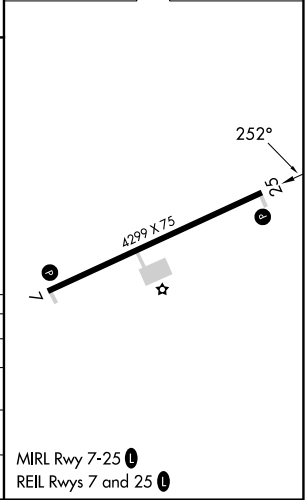


3800 6400 NAYIC VGSI and RNAV glidepath not coincident (VGSI Angle 3.50/TCH 47). 7 NM Holding Pattern



| CATEGORY          | A                  | B               | C                          | D  |
|-------------------|--------------------|-----------------|----------------------------|----|
| LPV DA            | 3201-1 7/8         | 548 (600-1 7/8) |                            | NA |
| LNAV/VNAV DA      | 3210-1 7/8         | 557 (600-1 7/8) |                            | NA |
| LNAV MDA          | 3200-1 547 (600-1) |                 | 3200-1 5/8 547 (600-1 5/8) | NA |
| <b>C</b> CIRCLING | 3240-1 587 (600-1) |                 | 3240-1 5/8 587 (600-1 5/8) | NA |

|           |           |
|-----------|-----------|
| ELEV 2653 | TDZE 2653 |
|-----------|-----------|



MIRL Rwy 7-25 1 REIL Rwy 7 and 25 1

NE-3, 17 APR 2025 to 15 MAY 2025

NE-3, 17 APR 2025 to 15 MAY 2025