

APP CRS	Rwy Idg	5822
357°	TDZE	4382
	Apt Elev	4382

RNAV (GPS) RWY 2

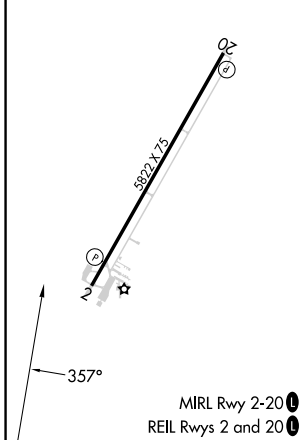
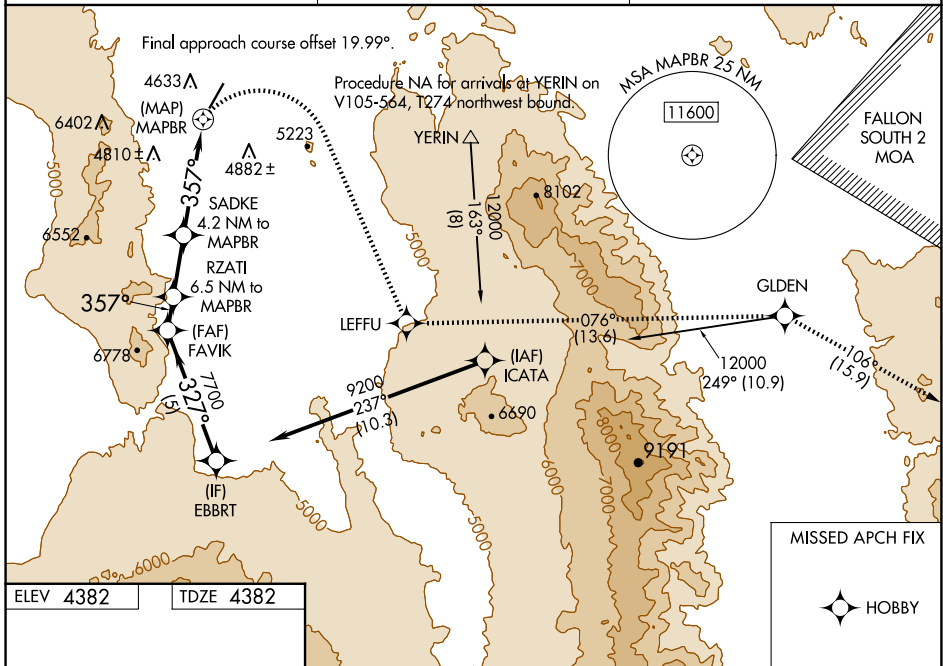
YERINGTON MUNI (O43)

RNP APCH - GPS.

Procedure NA at night. Rwy 2 helicopter visibility reduction below 1 SM NA. Circling NA west of Rwy 2-20. Use SPZ altimeter setting, when not received, use RNO altimeter setting and increase all MDAs 40 feet and LNAV* visibility Cat C 1/2 SM.

MISSED APPROACH: (Do not exceed 210K until LEFFU) Climbing right turn to 11500 direct LEFFU and on track 076° to GLDEN and on track 106° to HOBBY.
*Missed approach requires minimum climb of 276 feet per NM to 9300.

SPZ AWOS-2 120.475	OAKLAND CENTER 125.75 284.65	AUNICOM 122.8 (CTAF)
------------------------------	--	--------------------------------



	11500	LEFFU	tr 076°	GLDEN	tr 106°	HOBBY
EBBRT	FAVIK	RZATI	VGSIs and descent angles not coincident (VGSi Angle 3.00/TCH 40).			
9200	7700	7200	6300	MAPBR		
	3.77° TCH 40	6.5 NM to MAPBR	4.2 NM to MAPBR			
	327°	357°				
	5 NM	1.2 NM	2.3 NM	4.2 NM	0.5 NM	
CATEGORY	A	B	C	D		
LNAV MDA*	5040-1	658 (700-1)	5040-1 1/8	658 (700-1 1/8)		
LNAV MDA	6200-1 1/4	6200-1 1/2	6200-3	NA		
	1818 (1900-1 1/4)	1818 (1900-1 1/2)	1818 (1900-3)			
CIRCLING	6200-1 1/4	6200-1 1/2	6200-3	NA		
	1818 (1900-1 1/4)	1818 (1900-1 1/2)	1818 (1900-3)			

SW-4, 17 APR 2025 to 15 MAY 2025

SW-4, 17 APR 2025 to 15 MAY 2025