

WAAS CH <b>63237</b> <b>W19A</b>	APP CRS <b>192°</b>	Rwy Idg <b>3202</b> TDZE <b>236</b> Apt Elev <b>236</b>
--	------------------------	---

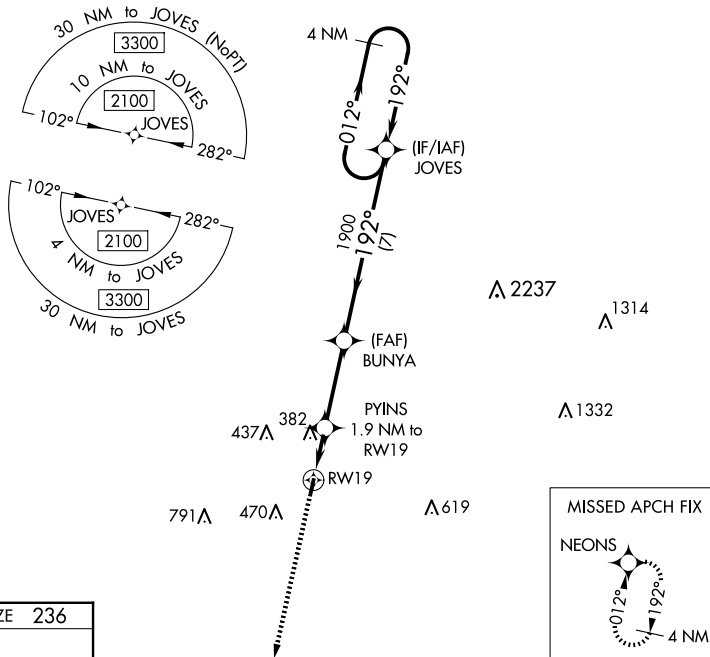
# RNAV (GPS) RWY 19

SHERIDAN-GRANT COUNTY RGNL (9M8)

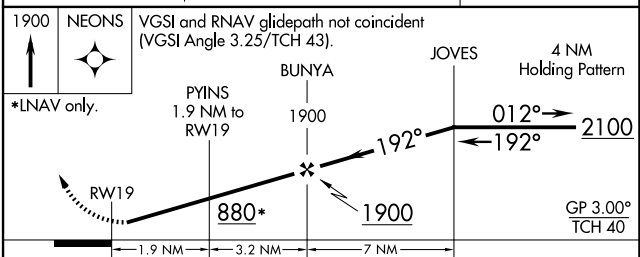
**NA** Baro-VNAV NA. DME/DME RNP-0.3 NA. Helicopter visibility reduction below 3/4 SM NA. Night landing: Rwy 1 NA. Use Pine Bluff altimeter setting, when not received, use Little Rock altimeter setting and increase all DA 5 feet and all MDA 20 feet: increase Circling Cat C visibility 1/4 mile.

MISSED APPROACH: Climb to 1900 direct NEONS and hold.

PBF ASOS <b>120.775</b>	LITTLE ROCK APP CON <b>135.4 353.6</b>	UNICOM <b>122.8 (CTAF)</b>
----------------------------	---	-------------------------------



ELEV 236	TDZE 236
----------	----------



CATEGORY	A	B	C	D
LPV DA	590-1 1/4	354 (400-1 1/4)		NA
LNAV/VNAV DA	682-1 1/2	446 (500-1 1/2)		NA
LNAV MDA	700-1	464 (500-1)	700-1 3/8 464 (500-1 3/8)	NA
<b>C</b> CIRCLING	740-1 504 (600-1)	840-1 604 (700-1)	960-2 724 (800-2)	NA

SC-1, 17 APR 2025 to 15 MAY 2025

SC-1, 17 APR 2025 to 15 MAY 2025