

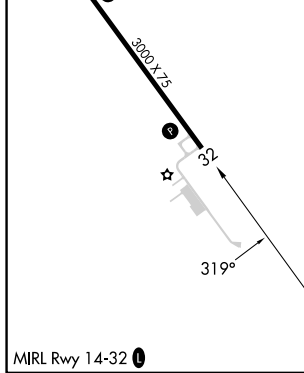
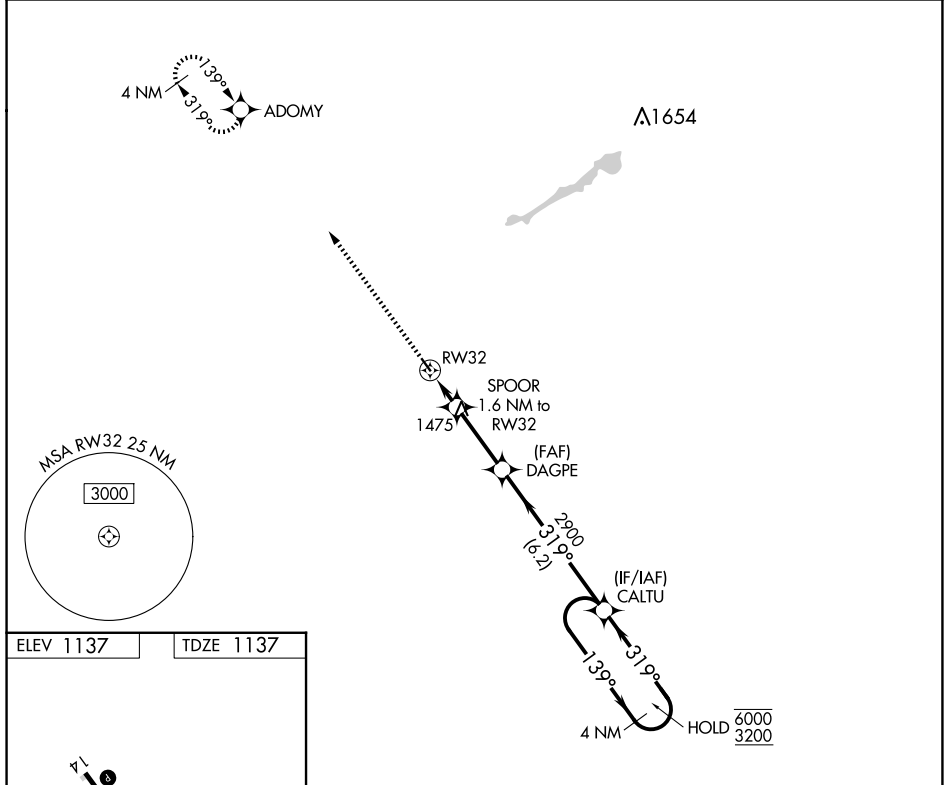
APP CRS	Rwy Idg	3000
319°	TDZE	1137
	Apt Elev	1137

RNAV (GPS) RWY 32

FERTILE MUNI (D14)

RNP APCH - GPS.		MISSED APPROACH: Climb to 3200 direct ADOMY and hold.
▼ ▲NA	Use Mahanomen altimeter setting.	

3N8 AWOS-3PT 121.125	GRAND FORKS APP CON ★ 118.1 318.1	UNICOM 122.8 (CTAF) 0
--------------------------------	---	---------------------------------



3200	ADOMY	VGSI and descent angles not coincident (VGSI Angle 3.70/TCH 31).		CALTU
↑	✧			4 NM Holding Pattern
		SPOOR 1.6 NM to RW32	DAGPE	6000 3200
		RW32	2900	
		1820	319°	139°
		1.6 NM	2.8 NM	6.2 NM
CATEGORY	A	B	C	D
LNAV MDA	1700-1	563 (600-1)	NA	
CIRCLING	1700-1	1760-1	NA	
	563 (600-1)	623 (700-1)		

NC-1, 17 APR 2025 to 15 MAY 2025

NC-1, 17 APR 2025 to 15 MAY 2025