

WAAS CH 97526 W09A	APP CRS 098°	Rwy Idg TDZE Apt Elev	3402 659 660
----------------------------------------	------------------------	-----------------------------	-----------------------------------------

RNAV (GPS) RWY 9

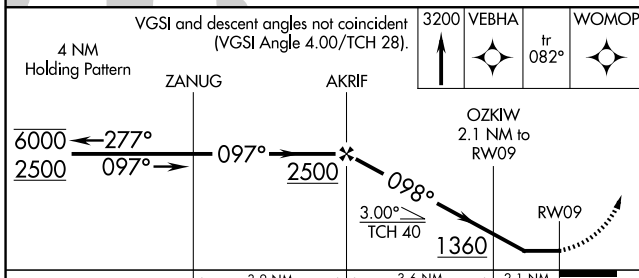
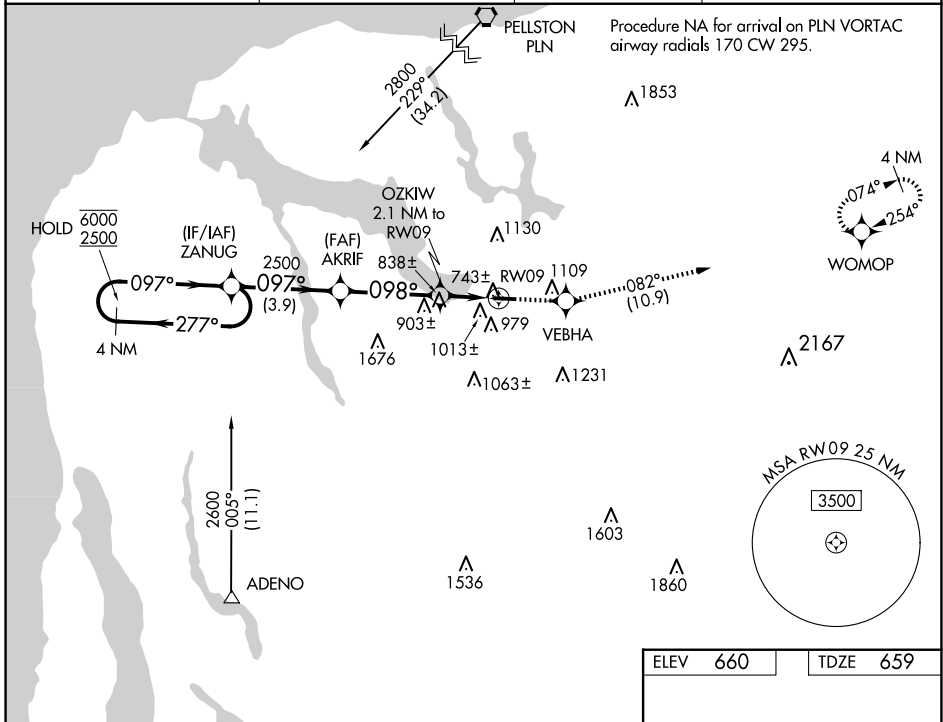
BOYNE CITY MUNI (N98)

RNP APCH - GPS.

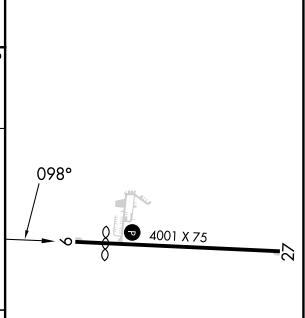
Use CVX altimeter setting; when not received, use MGN altimeter setting.
 Procedure NA at night. Rwy 9 helicopter visibility reduction below 1 SM NA.

MISSED APPROACH: Climb to 3200 direct VEBHA and on track 082° to WOMOP and hold.

CVX AWOS-3P 120.0	MINNEAPOLIS CENTER 134.6 354.05	UNICOM 122.8 (CTAF)	122.9
-----------------------------	-------------------------------------------	-------------------------------	--------------



ELEV 660	TDZE 659
----------	----------



CATEGORY	A	B	C	D
LP MDA	1060-1	401 (400-1)		NA
INAV MDA	1260-1	601 (600-1)		NA
CIRCLING	1480-1¼ 820 (900-1¼)	1500-1¼ 840 (900-1¼)		NA

REIL Rwy 27
 MRL Rwy 9-27

EC-1, 17 APR 2025 to 15 MAY 2025

EC-1, 17 APR 2025 to 15 MAY 2025