

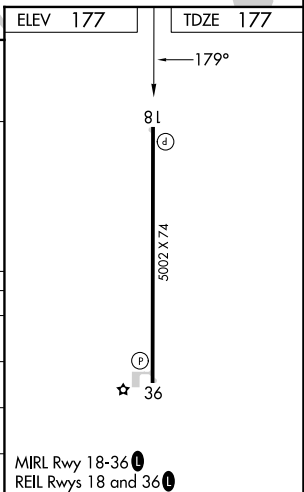
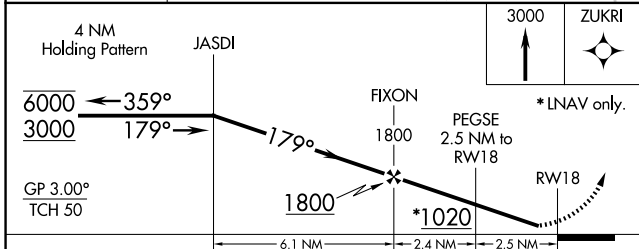
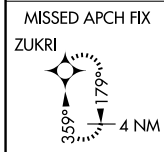
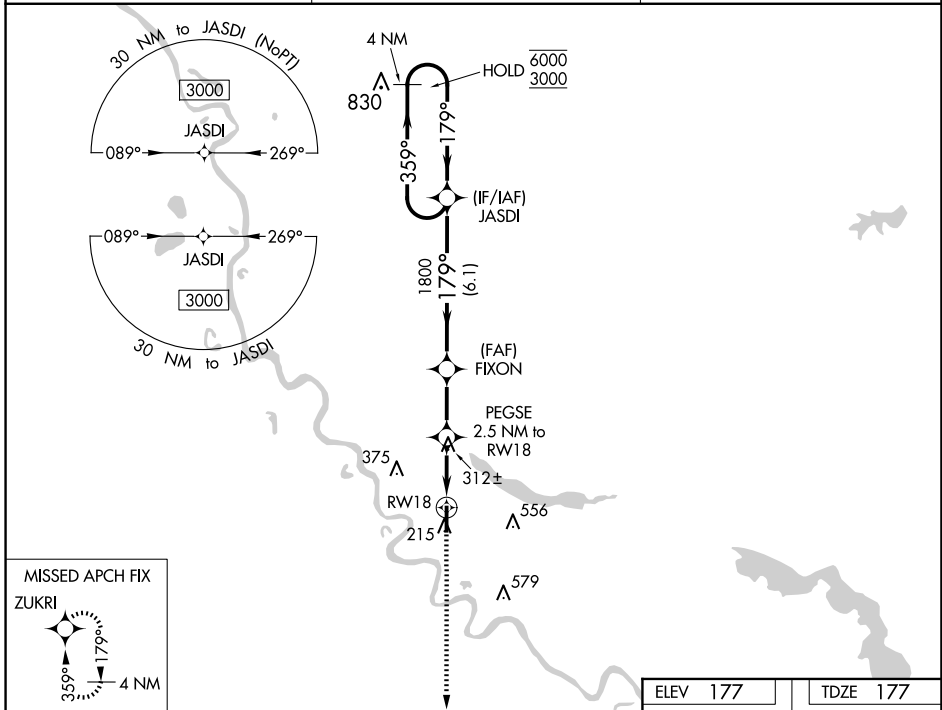
WAAS CH 93842 W18A	APP CRS 179°	Rwy Idg TDZE 177 Apt Elev 177	5002
--	------------------------	---	-------------

RNAV (GPS) RWY 18

THE RED RIVER (ØR7)

RNP APCH. MISSED APPROACH: Climb to 3000 direct ZUKRI and hold, continue climb in hold to 3000.
 ▼ Rwy 18 helicopter visibility reduction below ¼ SM NA. Baro-VNAV NA.
 ▲ NA Use Natchitoches altimeter setting. Procedure NA at night.

IER AWOS-3 119.025	POLK APP CON 132.05 254.8	CTAF 122.9 0
------------------------------	-------------------------------------	------------------------



CATEGORY	A	B	C	D
LPV DA	478-1 301 (400-1)			
LNAV/VNAV DA	632-1 ³ / ₈ 455 (500-1 ³ / ₈)			
LNAV MDA	620-1	443 (500-1)	620-1 ³ / ₈	443 (500-1 ³ / ₈)
CIRCLING	660-1	483 (500-1)	920-2 ¹ / ₄ 743 (800-2 ¹ / ₄)	940-2 ¹ / ₂ 763 (800-2 ¹ / ₂)

SC-4, 17 APR 2025 to 15 MAY 2025

SC-4, 17 APR 2025 to 15 MAY 2025