

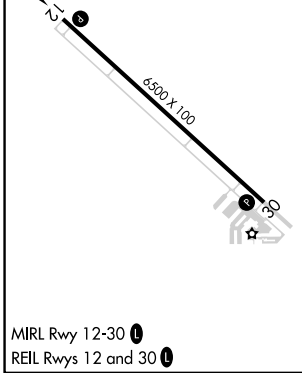
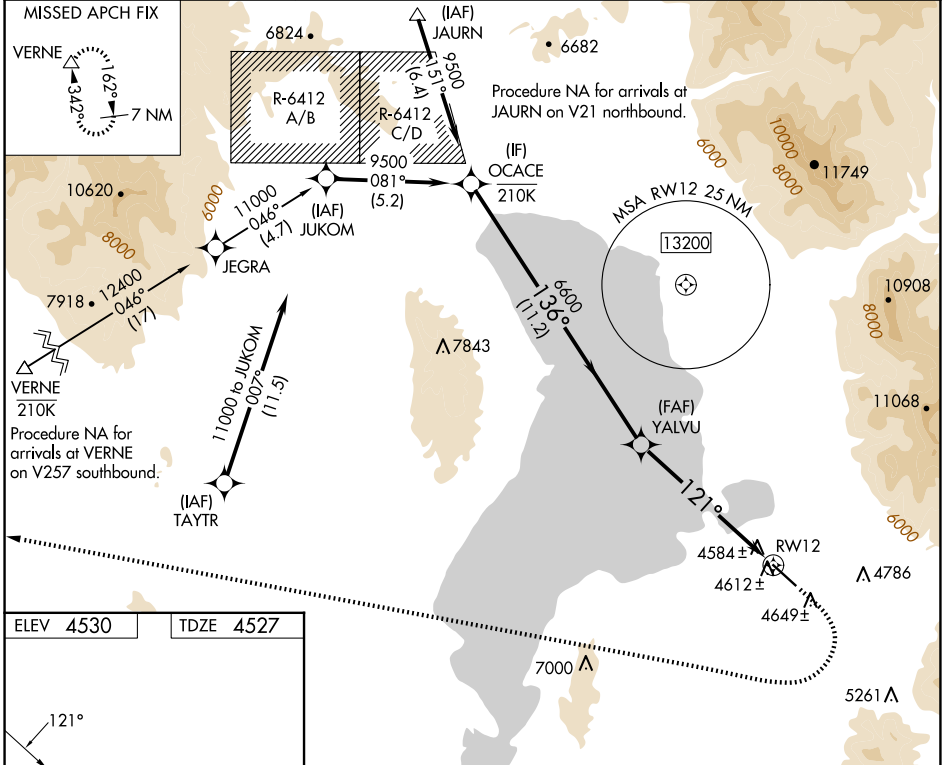
WAAS CH 82342 W12B	APP CRS 121°	Rwy Idg TDZE Apt Elev	6500 4527 4530
--	------------------------	-----------------------------	---

RNAV (GPS) Z RWY 12

SPANISH FORK MUNI/WOODHOUSE FLD (SPK)

RNP APCH - GPS.	<p>▼ Rwy 12 helicopter visibility reduction below 3/4 SM NA. When local altimeter setting not received, use PVU altimeter setting and increase all MDAs 20 feet.</p> <p>▲ NA</p> <p>⊗ -21°C</p>	<p>MISSED APPROACH: (Do not exceed 185K until VERNE) Climb to 5000 then climbing right turn to 11500 direct VERNE and hold.</p> <p>*Missed approach requires minimum climb of 380 feet per NM to 7600; if unable to meet climb gradient, see RNAV (GPS) Y RWY 12.</p>
-----------------	--	--

AWOS-3PT 119.275	SALT LAKE CITY APP CON 118.85 233.7	CTAF 122.9
----------------------------	---	----------------------



OCACE		Visual Segment - Obstacles.		
9500		5000	11500	VERNE
		↑	↷	△
		YALVU		RWY 12
		136°	121°	
		6600		
		11.2 NM	6.4 NM	
CATEGORY	A	B	C	D
LP MDA*	4980-1	453 (500-1)	4980-1 3/8	453 (500-1 3/8)
LNAV MDA*	4980-1	453 (500-1)	4980-1 3/8	453 (500-1 3/8)

SW-4, 17 APR 2025 to 15 MAY 2025

SW-4, 17 APR 2025 to 15 MAY 2025