

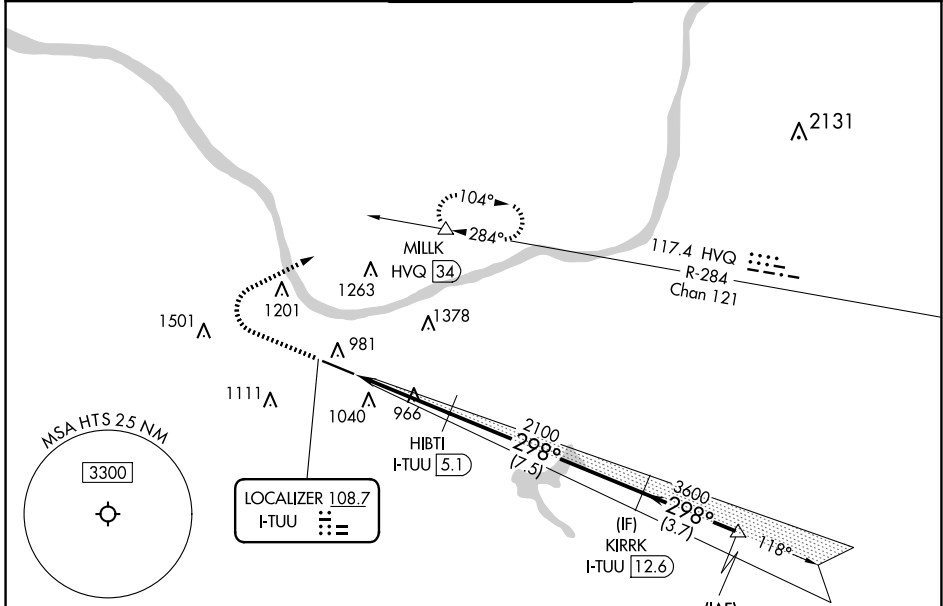
LOC I-TUU <b>108.7</b>	APP CRS <b>298°</b>	Rwy Idg 6516	TDZE 828
		Apt Elev 828	

# ILS or LOC RWY 30

TRI-STATE/MILTON J FERGUSON FLD (HTS)

DME required. RADAR required for procedure entry at HAITI.		MISSED APPROACH: Climb to 1300 then climbing right turn to 4000 heading 055° and on HVQ VOR/DME R-284 to MILK/HVQ 34 DME and hold, continue climb-in-hold to 4000.		
--	--	--	--	--

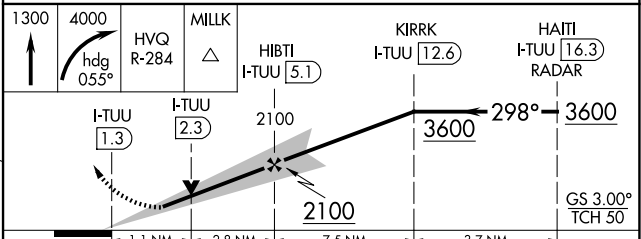
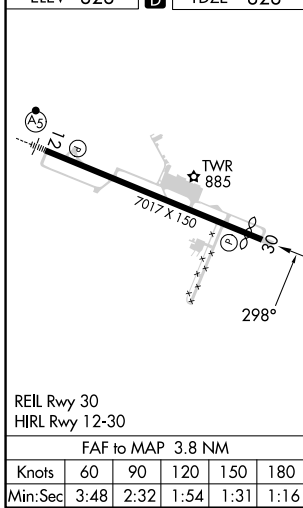
ATIS <b>125.2</b>	HUNTINGTON APP CON <b>119.75 270.1</b>	HUNTINGTON TOWER <b>118.5 270.1</b>	GND CON <b>121.9</b>	CLNC DEL <b>118.05</b>
----------------------	---	--	-------------------------	---------------------------



NE-4, 15 MAY 2025 to 12 JUN 2025

NE-4, 15 MAY 2025 to 12 JUN 2025

ELEV 828	<b>D</b>	TDZE 828
----------	----------	----------



	1.1 NM	2.8 NM	7.5 NM	3.7 NM
CATEGORY	A	B	C	D
S-ILS 30	1028- <sup>3</sup> / <sub>4</sub> 200 (200- <sup>3</sup> / <sub>4</sub> )			
S-LOC 30	1220-1	392 (400-1)	1220-1 <sup>1</sup> / <sub>8</sub>	392 (400-1 <sup>1</sup> / <sub>8</sub> )
<b>C</b> CIRCLING	1300-1 472 (500-1)	1380-1 552 (600-1)	1520-2 692 (700-2)	1740-3 912 (1000-3)

# ILS or LOC RWY 30