

LOS ALAMITOS, CALIFORNIA

# VOR or TACAN RWY 22L

VORTAC SLI <b>115.7</b> Chan <b>104</b>	APCH CRS <b>214°</b>	Rwy Idg TDZE Arpt Elev	<b>8001</b> <b>36</b> <b>36</b>
---	-------------------------	------------------------------	---------------------------------------

[USA]

LOS ALAMITOS AAF (JOINT FORCES TRAINING BASE JFTB) (KSLI)

DME required	SALSF 	MISSED APPROACH: Climb to 1800, then climbing left turn to 3100 via SLI VORTAC R-058 to AHEIM INT and hold, continue climb-in-hold.
<p>▼ * When ALS inop, increase CAT CD vis to 1 3/8 miles.</p> <p>** Circling not authorized N of Rwy 4L-22R. Circling to Rwy 4R not authorized at night.</p>		

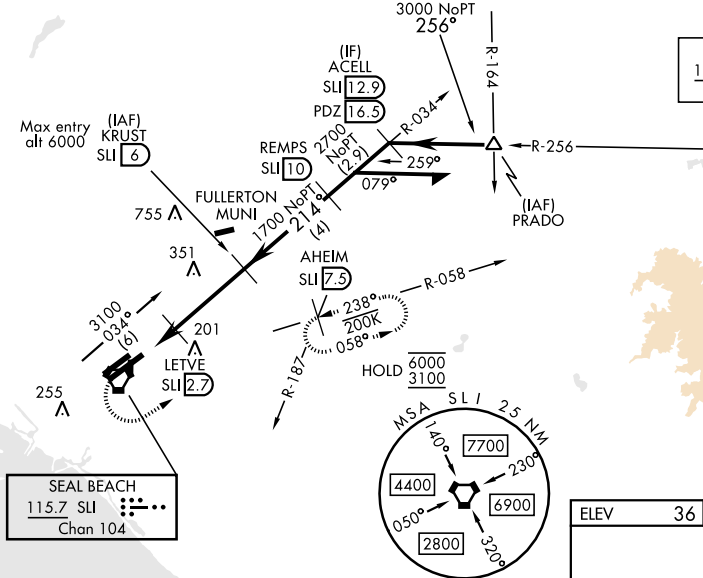
ATIS <b>118.875 379.975</b>	SOCAL APP CON <b>125.35 316.125</b>	TOWER <b>123.85 251.15</b>	GND CON <b>126.95 257.95</b>
--------------------------------	--	-------------------------------	---------------------------------

When local altimeter setting not received, use John Wayne/Orange County altimeter setting.

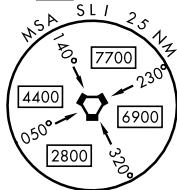
**POMONA**  
110.4 POM  
Chan 41

Procedure NA for arrivals at PRADO via V16-370 Eastbound.

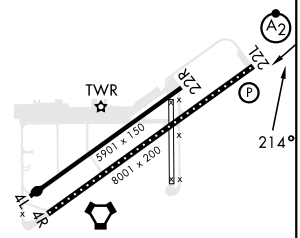
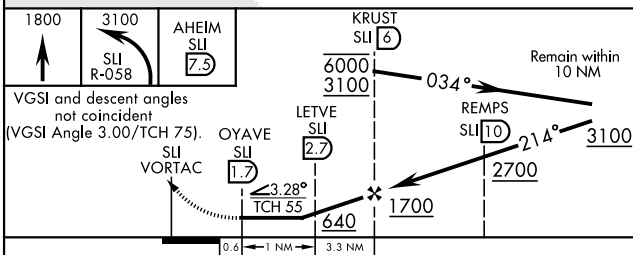
**PARADISE**  
112.2 PDZ  
Chan 59



**SEAL BEACH**  
115.7 SLI  
Chan 104



ELEV	36	TDZE	36
------	----	------	----



CATEGORY	A	B	C	D
S-22L*	500-1	464 (500-1)	500-1 1/8 464 (500-1 1/8)	
CIRCLING**	500-1	464 (500-1)	600-1 1/2 564 (600-1 1/2)	600-2 564 (600-2)
KSNA-SNA (JOHN WAYNE/ORANGE COUNTY) ALTIMETER SETTING MINIMUMS				
S-22L	540-1	504 (600-1)	540-1 3/8 504 (600-1 3/8)	
CIRCLING**	540-1	504 (600-1)	640-1 3/4 604 (700-1 3/4)	640-2 604 (700-2)

HIRL Rwy 4R-22L  
MIRL Rwy 4L-22R  
REIL Rwy 22L

LOS ALAMITOS, CALIFORNIA  
Amdt 8 11JUL24

LOS ALAMITOS AAF (JOINT FORCES TRAINING BASE JFTB) (KSLI)  
33°47'N-118°03'W

# VOR or TACAN RWY 22L

SW-3, 15 MAY 2025 to 12 JUN 2025

SW-3, 15 MAY 2025 to 12 JUN 2025